

Apache OpenOffice

Version 4.1

Getting Started

AOO Documentation Team

Copyright

This document is Copyright © 2023 by The Apache Software Foundation. You may distribute it and/or modify it under the terms of the Creative Commons Attribution License, version 3.0 or later (<https://creativecommons.org/licenses/by/3.0/>).

Apache, Apache OpenOffice, and OpenOffice.org are trademarks of the Apache Software Foundation. Used with permission. .

Acknowledgments

This book is updated from *Taming Apache OpenOffice 3.4* (by Jean Hollis Weber), which was adapted from *Getting Started with OpenOffice.org 3.3* (by the OOoAuthors team) with additional material adapted from *Getting Started with LibreOffice 3.4* (by the ODF Authors Team).

Publication date and software version

Published 19 April 2023. Based on Apache OpenOffice 4.1.

Contents

Chapter 1	
Introducing Apache OpenOffice.....	4
What Is Apache OpenOffice?.....	4
Writer (word processor).....	4
Calc (spreadsheet).....	4
Impress (presentations).....	5
Draw (vector graphics).....	5
Base (database).....	5
Math (formula editor).....	5
Advantages of Apache OpenOffice.....	5
Minimum Requirements.....	6
How to Get and Install the Software.....	7
Extensions and Add-Ons.....	7
Starting Apache OpenOffice.....	7
Using the Quick-Starter Under Windows.....	8
Using the Quick-Starter in Linux and macOS.....	8
Parts of the Main window.....	9
Menu Bar.....	9
Toolbars.....	10
Right-Click (context) Menus.....	12
Status Bar.....	13
Sidebar.....	14
Starting a New Document.....	15
Opening an Existing Document.....	16
Saving a Document.....	16
Password Protection.....	17
Saving a Document Automatically.....	17
Using the Navigator.....	18
Using the Open and Save As Dialogs.....	19
Undoing and Redoing Changes.....	20
Reloading a Document.....	21
Closing a Document.....	22
Closing Apache OpenOffice.....	22

Chapter 1

Introducing Apache OpenOffice

What Is Apache OpenOffice?

Apache OpenOffice is a freely available, full-featured office productivity suite. Its native file format is OpenDocument, an open standard format that is supported by several office suites but is not controlled by any one company and has been adopted by some governments (e.g., the United Kingdom) as a required file format for publishing and accepting documents. Apache OpenOffice can also open and save documents in many other formats, including those used by various versions of Microsoft Office.

Apache OpenOffice includes the following components.

Writer (word processor)

Writer is a feature-rich tool for creating letters, books, reports, newsletters, brochures, and other documents. You can insert graphics and objects from other components into Writer documents. Writer can export files to several versions of Microsoft Word files, Adobe's Portable Document Format (PDF), HTML and other formats.

Calc (spreadsheet)

Calc has all the advanced analysis, charting, and decision-making features expected from a high-end spreadsheet. It includes over 300 functions for financial, statistical, and mathematical operations, among others. The Scenario Manager provides "what if" analysis. Calc generates 2-D and 3-D charts, which can be integrated into other Apache OpenOffice documents. You can also open and work with Microsoft Excel workbooks and save them in some Excel formats. Calc can also export spreadsheets to PDF and HTML.

Impress (presentations)

Impress provides all the common multimedia presentation tools, such as special effects, animation, and drawing tools. It is integrated with the advanced graphics capabilities of Apache OpenOffice's Draw and Math components. Slide shows can be further enhanced with Fontwork's special effects text, as well as sound and video clips. Impress is compatible with Microsoft's PowerPoint file format and can also save your work in numerous graphics formats.

Draw (vector graphics)

Draw is a vector drawing tool that can produce everything from simple diagrams or flowcharts to 3-D artwork. Its Smart Connectors feature allows you to define your own connection points. You can use Draw to create drawings for use in any of Apache OpenOffice's other components, and you can create your own clip art and add it to the Gallery. Draw can import graphics from many common formats and save them in over 20 formats, including PNG, HTML, and PDF.

Base (database)

Base provides tools for day-to-day database work within a simple interface. It can create and edit forms, reports, queries, tables, views, and relations, so that managing a connected database is much the same as in other popular database applications. Base provides many features, such as the ability to analyze and edit relationships from a diagram view. In its default configuration, Base uses HSQLDB, which is included in Apache OpenOffice, as its database engine and stores the database tables in the Base document. It can also use dBASE, Microsoft Access, MySQL, Oracle, or any ODBC compliant or JDBC compliant database engine and connect to external tables.

Math (formula editor)

Math is Apache OpenOffice's formula or equation editor. You can use it to create complex equations that include symbols or characters not available in standard font sets. While it is most commonly used to create formulas in other documents, such as Writer and Impress files, Math can also work as a standalone tool. You can save formulas in the standard Mathematical Markup Language (MathML) format for inclusion in web pages and other documents not created by Apache OpenOffice.

Advantages of Apache OpenOffice

Here are some of the advantages of Apache OpenOffice over proprietary office suites:

- **No licensing fees.** Apache OpenOffice is free for anyone to use and distribute at no cost. There are no hidden charges now or in the future.
- **Open source.** You can distribute, copy, and modify the software as much as you wish, in accordance with the Apache 2 license.
- **Cross-platform.** Apache OpenOffice runs on several hardware architectures and under multiple operating systems, such as Microsoft Windows, macOS, and Linux.
- **Extensive language support.** The user interface for Apache OpenOffice is available in several languages, along with spelling, hyphenation, and thesaurus dictionaries. It supports bidirectional text and complex text layout for many scripts.

- **Consistent user interface.** All the components have a similar “look and feel,” making them easy to use and master.
- **Integration.** The components of Apache OpenOffice are well integrated with one another.
 - All the components share a common spelling checker and other tools, which are used consistently across the suite. For example, the drawing tools available in Writer are also found in Calc, with similar but enhanced versions in Impress and Draw.
 - You do not need to know which application was used to create a particular file. For example, you can open a Draw file from Writer; it will open automatically in Draw.
- **Granularity.** Usually, if you change an option, it affects all components. However, Apache OpenOffice options can be set at a component level or even document level.
- **File compatibility.** In addition to its native OpenDocument formats, Apache OpenOffice includes support for opening and saving files in many common formats including Microsoft Office (does not include saving in the newer formats DOCX, XLSX for example), HTML, XML and PDF (export only).
- **No vendor lock-in.** Apache OpenOffice uses OpenDocument, an XML (eXtensible Markup Language) file format developed as an industry standard by OASIS (Organization for the Advancement of Structured Information Standards). These files can easily be unzipped and read by any text editor, and their framework is open and published.
- **You have a voice.** Enhancements, software fixes, and release dates are community-driven. You can join the community and affect the course of the product you use.

Minimum Requirements

Apache OpenOffice 4.1 requires one of the following operating systems:

- **Microsoft Windows** XP, 2003, 2012, Vista, 7, 8, 8.1, 10 or 11
- **GNU/Linux** Kernel version 2.6 and glibc 2.5 or higher
- **macOS** 10.7 (Lion) or higher

For more details, see https://www.openoffice.org/dev_docs/source/sys_reqs_aoo41.html

Some features (wizards, some accessibility features, and the HSQLDB database engine) require that a Java Runtime Environment (JRE) be installed on your computer. Although Apache OpenOffice will work without Java support, those features will not be available. The current versions of Apache OpenOffice work reliably with a variety of JREs including Oracle Java, versions 6, 7 and 8, openJDK, versions 6, 7 and 8 and AdoptOpenJDK, versions 8 and 11. You should use the most recent version of whichever JRE you choose for the best security and reliability.

Note For Microsoft Windows, a 32-bit JRE **MUST** be installed, even on a 64-bit machine

How to Get and Install the Software

You can download the installation package (approximately 150 MB) from the project's website, <https://www.openoffice.org/download/index.html>. The download process automatically redirects to a SourceForge web page which starts the download without the need to take any action on that page.

To install Apache OpenOffice, follow the same procedure that you used to install other software.

Extensions and Add-Ons

Extensions and add-ons that enhance Apache OpenOffice are collected in the official extensions repository, <https://extensions.openoffice.org/>. Most are free, but some are not. See Chapter 11 (Setting up and Customizing Apache OpenOffice) for more information.

Starting Apache OpenOffice

In general, you start Apache OpenOffice the same way you start any other program on your computer.

On Windows and Linux, entries for Apache OpenOffice and each of its components appear in the system menu of your computer. On macOS, only an entry for Apache OpenOffice is added to the Applications menu. You can make a desktop icon for Apache OpenOffice or a component in the same way you can make a desktop icon for any other program; see your operating system's help for how to do this.

- Clicking on the Apache OpenOffice menu entry, desktop icon, or tile opens the Apache OpenOffice Start Center (Figure 13 on page 15) from where you can select the individual components. You can also choose to open an existing file or use a template.
- On Windows, you can use the Quickstarter (see below).
- You can double-click on the filename of a document with an OpenDocument extension such as `.odt`, `.ods`, `.odp` in a file manager such as Windows Explorer, Finder on macOS, or Nautilus on Linux. The appropriate component will start, and the document will be loaded.

Note for Windows Users

If you have associated Microsoft Office file types with Apache OpenOffice, then when you double-click on a `*.doc` (Word) file, it opens in Writer; `*.xls` (Excel) files open in Calc, and `*.ppt` (PowerPoint) files open in Impress.

If you did not associate the file types, then when you double-click on a Microsoft Word document, it opens in Microsoft Word (if Word is installed on your computer), Excel files open in Excel, and PowerPoint files open in PowerPoint.

You can search the Windows help for Default Apps to see how to associate each file type with OpenOffice. In addition to associating Microsoft Office file types with OpenOffice, it may also be necessary to reestablish the association between OpenOffice and its native file formats when a Windows update causes Microsoft Office to claim those file types.

Using the Quick-Starter Under Windows

The Quick-starter is an icon that is placed in the Windows system tray during system startup. It indicates that Apache OpenOffice has been loaded and is ready to use. (The Quickstarter shortens the startup time for Apache OpenOffice components by about half.) If the Quickstarter is disabled, see “Reactivating the Quick-Starter” if you want to enable it.

Using the Quick-Starter Icon

Right-click the Quick-starter icon in the system tray to open a pop-up menu (Figure 1) from which you can open a new document, open the Templates and Documents dialog, or choose an existing document to open. You can also double-click the **Quickstarter** icon to directly open the Templates and Documents dialog.

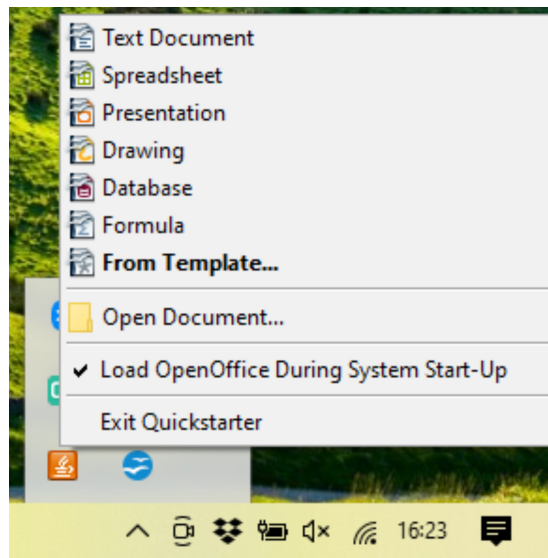


Figure 1: Quickstarter pop-up menu

Disabling the Quick-Starter

To close the Quickstarter, right-click on the icon in the system tray, and then click **Exit Quickstarter** on the pop-up menu. The next time the computer is restarted, the Quick-starter will be loaded again.

To prevent Apache OpenOffice from loading during system startup, deselect the **Load OpenOffice during system start-up** item on the pop-up menu. You might want to do this if your computer has insufficient memory, for example.

Reactivating the Quick-Starter

If the Quickstarter has been disabled, you can reactivate it by selecting the **Load OpenOffice during system start-up** checkbox in **Tools > Options > OpenOffice > Memory**.

Using the Quick-Starter in Linux and macOS

Apache OpenOffice under Linux has a Quick-starter that looks and acts like the one described above for Windows. (The checkbox on the Memory page is labeled **Enable systray quickstarter**. If you do not have this checkbox, the Quick-starter module is not installed on your system.)

macOS provides similar functionality through a pop-up menu from the dock.

Parts of the Main window

The main window is similar in each component of Apache OpenOffice, although some details vary. See the chapters in this book about Writer, Calc, Draw, and Impress for descriptions of those details.

Common features include the menu bar, the standard toolbar, and the formatting toolbar at the top of the window and the status bar at the bottom.

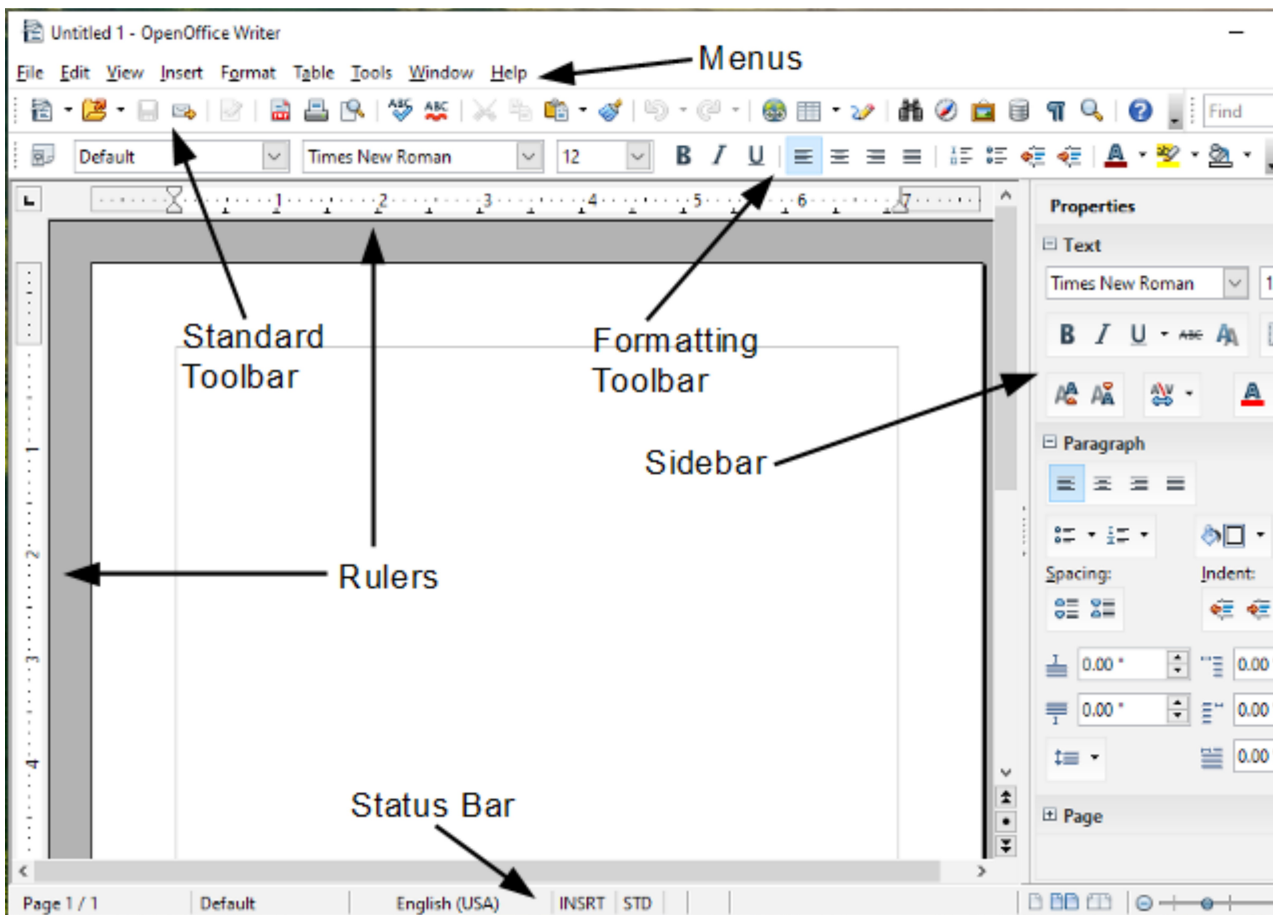


Figure 2: Elements of the main Writer window

Menu Bar

The *Menu bar* is located across the top of the Apache OpenOffice window, just below the Title bar. (On macOS it is at the top of the screen in the same location as the menu bar for other programs.) When you choose one of the menus listed below, a sub-menu drops to show commands.

- **File** contains commands that apply to the entire document such as Open, Save, and Export as PDF.
- **Edit** contains commands for editing the document such as Undo: xxx (where xxx is the command to undo) and Find & Replace. It also contains commands to cut, copy, and paste selected parts of your document.

- **View** contains commands for controlling the display of the document such as Zoom and Web Layout.
- **Insert** contains commands for inserting elements into your document such as Header, Footer, and Picture.
- **Format** contains commands, such as Styles and Formatting and AutoCorrect, for formatting the layout of your document.
- **Table** shows all commands to insert and edit a table in a text document.
- **Tools** contains functions such as Spelling and Grammar, Customize, and Options.
- **Window** contains commands for the display window.
- **Help** contains links to the OpenOffice Help file, What's This?, and information about the program.

Toolbars

Apache OpenOffice has several types of toolbars: docked, floating, and tear-off. Docked toolbars can be moved to different locations or made to float, and floating toolbars can be docked.

The top docked toolbar is called the *Standard toolbar*. The *Standard toolbar* is consistent across the OpenOffice applications.

The second toolbar at the top is the *Formatting toolbar*. It is a context-sensitive bar that shows the relevant tools in response to the cursor's current position or selection. For example, when the cursor is on a graphic, the Formatting bar provides tools for formatting graphics; when the cursor is in text, the tools are for formatting text.

Displaying or Hiding Toolbars

To display or hide toolbars, choose **View > Toolbars**, then click on the name of a toolbar in the list. An active toolbar shows a check mark beside its name. Tear-off toolbars are not listed in the View menu.

Submenus and Tear-Off Toolbars

Toolbar icons with a small triangle to the right will display *submenus*, *tear-off toolbars*, and other ways of selecting things, depending on the icon.

Figure 3 shows a tear-off toolbar from the Drawing toolbar.

The tear-off toolbars can be floating or docked along an edge of the screen or in one of the existing toolbar areas. To move a floating tear-off toolbar, drag it by the title bar. See "Moving Toolbars" below.

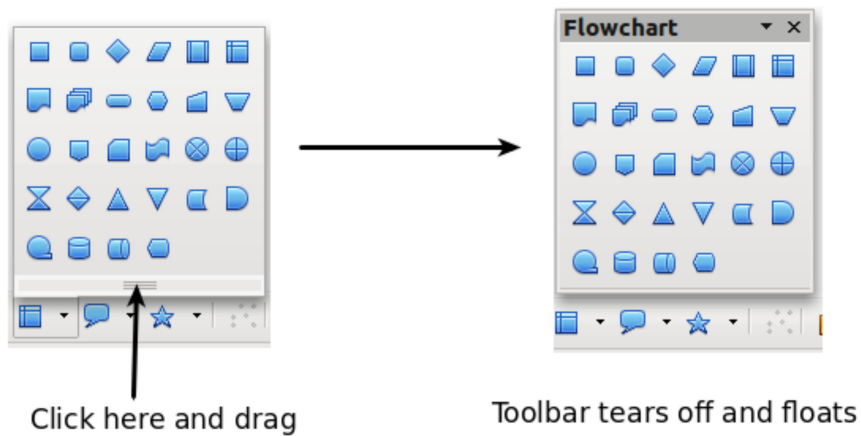


Figure 3: Example of a tear-off toolbar

Floating Toolbars

Apache OpenOffice includes several additional context-sensitive toolbars, whose defaults appear as floating toolbars in response to the cursor's current position or selection. For example, when the cursor is in a table, a floating *Table* toolbar appears, and when the cursor is in a numbered or bullet list, the *Bullets and Numbering* toolbar appears. You can dock these toolbars to the top, bottom, or side of the window, if you wish (see "Moving Toolbars" below).

Moving Toolbars

To move a docked toolbar, place the mouse pointer over the toolbar handle (the small vertical bar to the left of the toolbar), hold down the left mouse button, drag the toolbar to the new location, and then release the mouse button (Figure 4). To move a floating toolbar, click on its title bar and drag it to a new location (Figure 5).

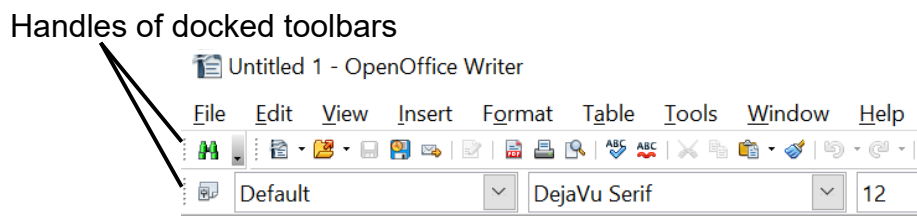


Figure 4: Moving a docked toolbar

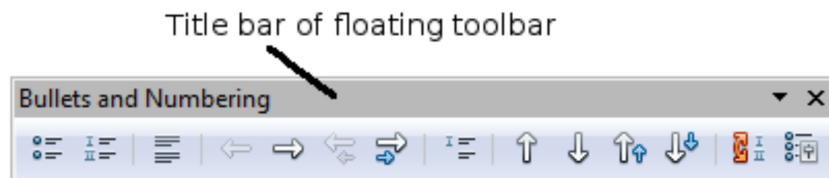


Figure 5: Moving a floating toolbar

Docking Floating Windows and Toolbars

Toolbars and some windows, such as the Navigator and the Styles and Formatting window, are dock-able. You can move, resize, or dock them to an edge.

To dock a window or toolbar, hold down the *Ctrl* key and double-click on the frame of the floating window (or in a vacant area near the icons at the top of the floating window) to dock it in its last position.

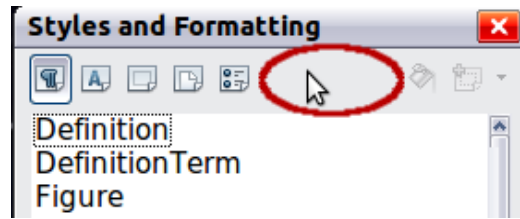


Figure 6: *Ctrl*+click to dock or undock

To undock a window, hold down the *Ctrl* key and double-click on the frame (or a vacant area near the icons at the top) of the docked window.

Customizing Toolbars

You can customize toolbars in several ways, including choosing which icons are visible and locking the position of a docked toolbar. You can also add icons and create new toolbars, as described in Chapter 11.

To access a toolbar's customization options, use the down-arrow at the end of the toolbar or on its title bar.

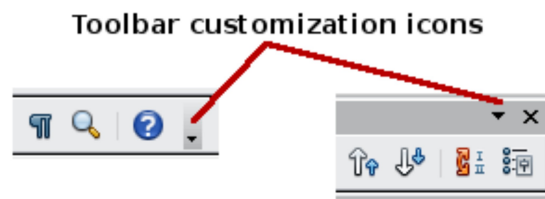


Figure 7: Customizing toolbars

To show or hide icons defined for the selected toolbar, choose **Visible Buttons** from the drop-down menu. Visible icons are indicated by an outline around the icon. Click on icons to hide or show them on the toolbar.

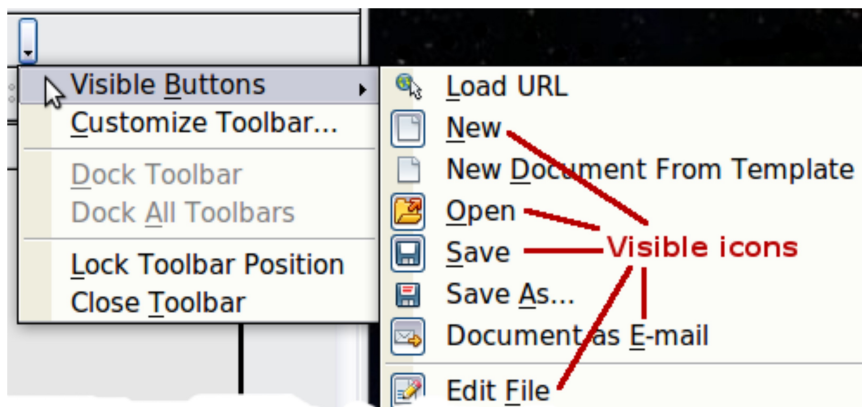


Figure 8: Selection of visible toolbar icons

Right-Click (context) Menus

You can quickly access many menu functions by right-clicking on a paragraph, graphic, or other object. A context menu will pop up. Often the context menu is the

fastest and an easier way to reach a function. If you are not sure where a function is located in the menus or toolbars, you can frequently find it by right-clicking.

Status Bar

The status bar is located at the bottom of the workspace. It provides information about the document and convenient ways to quickly change some features. It is similar in Writer, Calc, Impress, and Draw, although each component includes some component-specific items.

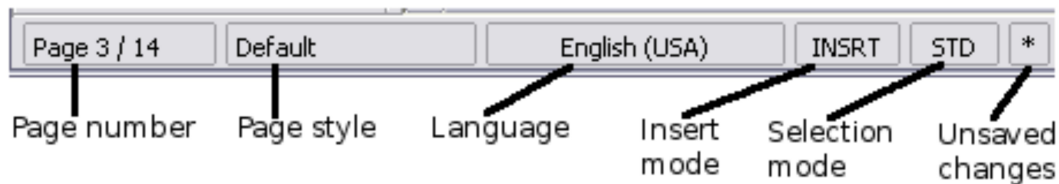


Figure 9: Left end of status bar in Writer

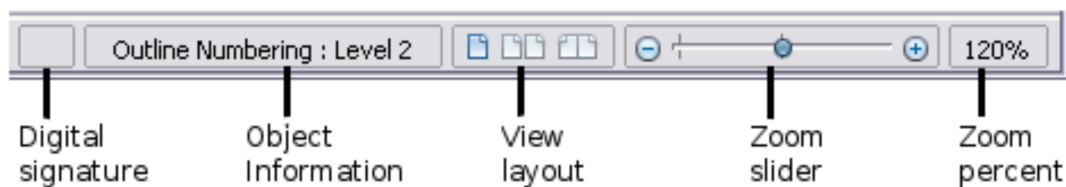


Figure 10: Right end of status bar in Writer

Common status bar items are described below.

Page, sheet, or slide number

Shows the current page, sheet, or slide number and the total number of pages, sheets, or slides in the document. Double-click on this field to open the Navigator. Other uses of this field depend on the component.

Page style or slide design

Shows the current page style or slide design. To edit the current page style or slide design, double-click on this field.

Unsaved changes

An asterisk (*) appears here if changes to the document have not been saved.

Digital signature

If the document has been digitally signed, an icon shows here. You can double-click the icon to view the certificate.

Object information

Displays information relevant to the cursor's position or the selected element of the document. Double-clicking in this area usually opens a relevant dialog.

Zoom slider and percent

To change the view magnification, drag the Zoom slider, or click on the + and — signs, or right-click on the zoom level percent to pop up a list of magnification values from which to choose. Double-clicking on the zoom level percent opens the **Zoom & View Layout** dialog.

Sidebar

The Sidebar (Figure 11) is located on the right side of the edit views of Writer, Calc, Impress, and Draw. It contains one or more decks, based on the current document context. Decks are organized into panels. A tab bar on the right side of the sidebar allows you to switch between different decks.

All four components contain the Properties, Styles, Gallery, and Navigator decks. Some components have additional decks, such as Master Pages, Custom Animation, and Slide Transition for Impress and Functions for Calc.

A panel is like a combination of a toolbar and a dialog. For example, you can freely mix working on the text in the main edit window and using the Styles panel in the sidebar to change text attributes.

Toolbars and Sidebar panels share many functions. For example, the buttons for making text bold or italic exist in both the Formatting toolbar and the Properties panel.

If the Sidebar is not visible, you can show it by using **View > Sidebar** on the menu bar. To hide the Sidebar, click on the gray **Hide** button on the left. Click on the same button to show the Sidebar again.

To undock the Sidebar and make it floating, and to dock a floating Sidebar, use the Sidebar settings drop-down list at the top of the tab bar (see Figure 11). From the same list you can choose which items to show in the Sidebar.

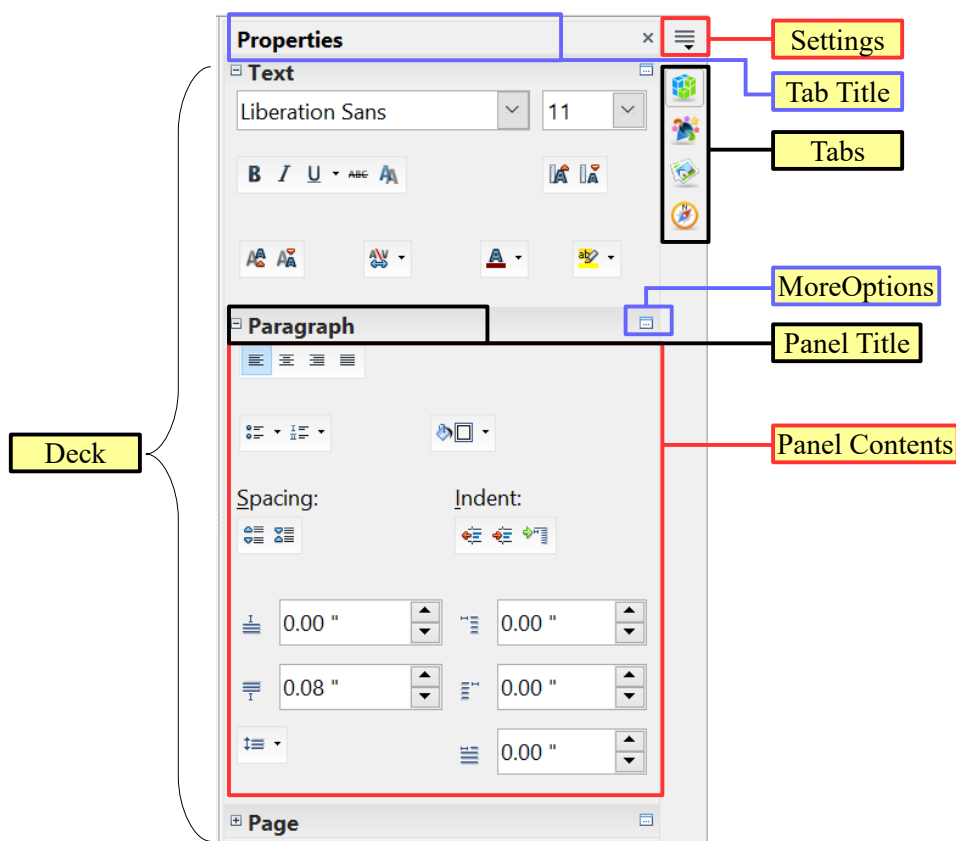


Figure 11: Properties panel of Sidebar in Writer

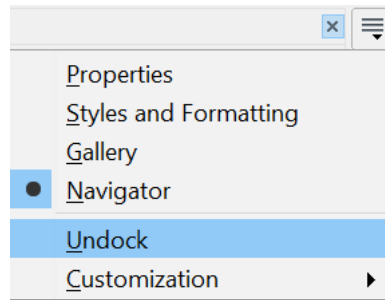


Figure 12: Floating (undocking) or docking the Sidebar

Starting a New Document

You can start a new, blank document in Apache OpenOffice in several ways.

When Apache OpenOffice is open, but no document is open (for example if you close all the open documents but leave the program running), the Start Center is shown. Click one of the icons to open a new document of that type, or click the Templates icon to start a new document using a template.

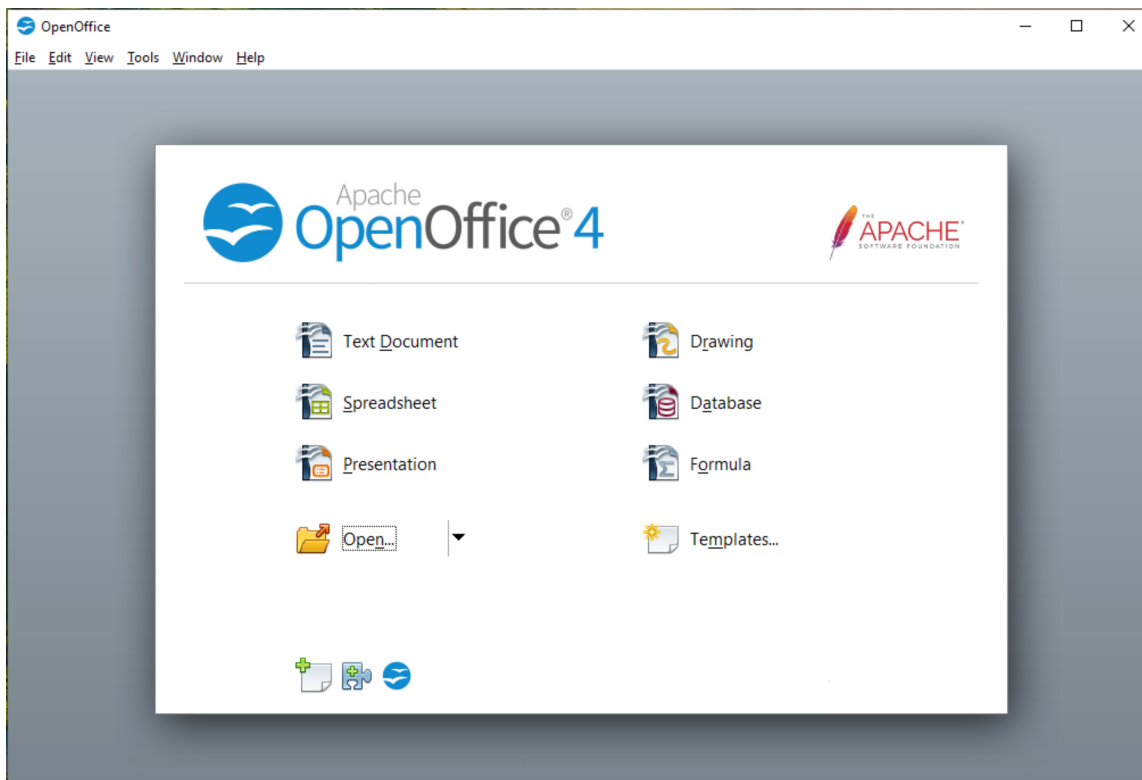


Figure 13: Apache OpenOffice Start Center

You can also start a new document in one of the following ways.

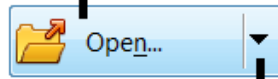
- Use **File > New** and choose the type of document.
- Use the arrow next to the **New** button on the main toolbar. From the drop-down menu, select the type of document to be created.
- Press **Ctrl+N** on the keyboard.
- Use **File > Wizards** for some special types of documents.

If a document is already open in Apache OpenOffice, the new document opens in a new window.

Opening an Existing Document

When no document is open, the Start Center provides an icon for opening an existing document or choosing from a list of recently-edited documents.

Open a file browser



Open a list of recently opened documents

You can also open an existing document in one of the following ways.

- Choose **File > Open**.
- Click the **Open** button on the main toolbar.
- Press *Ctrl+O* on the keyboard.

In each case, the Open dialog appears. Select the file you want, and then click **Open**. If a document is already open in Apache OpenOffice, the second document opens in a new window.

In the Open dialog, you can reduce the list of files by selecting the type of file you are looking for. For example, if you choose **Text documents** as the file type, you will only see documents Writer can open (including `.odt`, `.doc`, `.txt`); if you choose **Spreadsheets**, you will see `.ods`, `.xls`, and other files that Calc opens.

You can also open an existing document that is in an OpenDocument format by double-clicking on the file's icon on the desktop or in a file manager such as Windows Explorer.

If you have associated Microsoft Office file formats with Apache OpenOffice, you can also open these files by double-clicking on them.

Saving a Document

To save a new document, do one of the following:

- Press *Ctrl+S*.
- Choose **File > Save** from the menu bar.
- Click the **Save** button on the main toolbar.

When the Save As dialog appears, enter the file name, verify the file type (if applicable), and click **Save**.

To save an open document with the current file name, choose **File > Save**. This will overwrite the last saved state of the file.

Password Protection

To protect an entire document from being viewable without a password, use the option on the Save As dialog to enter a password.

- 1) On the Save As dialog, select the **Save with password** option, and then click **Save**. You will receive a prompt (Figure 14).



Figure 14: Entering a password for a document

- 2) Type the same password in both fields, and then click **OK**. If the passwords match, the document is saved password protected. If the passwords do not match, you receive an error message. Close the message box to return to the Set Password dialog and enter the password again.

Caution



Apache OpenOffice uses a very strong encryption mechanism that makes it almost impossible to recover the contents of a document if you lose the password.

Writer and Calc provide a second level of protection, which allows a file to be viewed but not changed without a password; that is, the file opens in read-only mode.

To protect a document from being changed:

- 1) Choose **More Options** from the Set Password dialog.
- 2) Enter the password in the *Enter password to allow editing* field. Repeat the password in the *Confirm password* field. Click **OK**.


Saving a Document Automatically

You can choose to have Apache OpenOffice save a temporary version of your file automatically. This temporary version is stored separately from the original file, and it allows AutoRecovery if the program should crash. However, automatic saving does not overwrite the last saved state of the file and does not substitute for periodically saving your work. To set up automatic file saving:

- 1) Choose **Tools > Options > Load/Save > General**.
- 2) Mark **Save AutoRecovery information every**, and set the time interval.

Using the Navigator

The Navigator lists objects contained in a document, collected into categories. For example, in Writer it shows Headings, Tables, Text frames, Comments, Graphics, Bookmarks, and other items, as shown in Figure 15. In Calc it shows Sheets, Range Names, Database Ranges, Graphics, Drawing Objects, and other items. In Impress and Draw it shows Slides, Pictures, and other items.

To open the Navigator, click its icon  on the sidebar or the Standard toolbar, or press *F5*, or choose **View > Navigator** on the menu bar. The Sidebar is often the most convenient location for the Navigator.

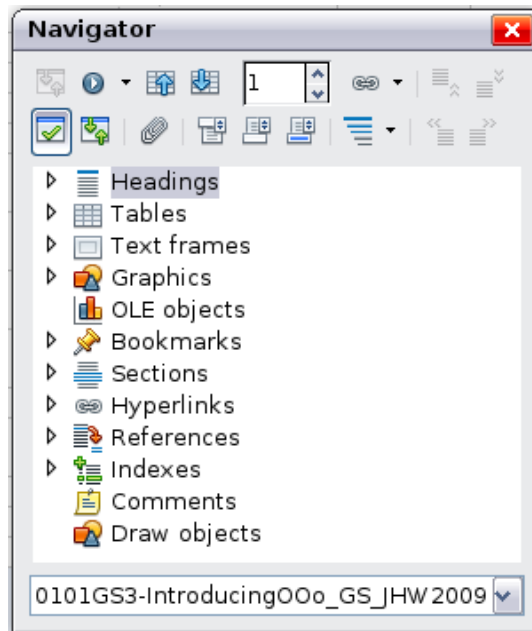





Figure 15: The Navigator

Click the marker (+ or triangle) by any of the categories to display the list of items in that category.

To hide the list of categories and show only the toolbars at the top, click the **List Box On/Off** icon . Click this icon again to show the list box.

The Navigator provides several convenient ways to move around a document and find items in it:

- When a category is showing the list of objects in it, double-click on an object to jump directly to that object's location in the document.
- Objects are easier to find if you have given them names when creating them, instead of keeping Apache OpenOffice's default graphics1, graphics2, Table1, Table2, and so on—which may not correspond to the position of the object in the document.
- If you only want to see the content in a certain category, highlight the category and click the **Content View** icon . Until you click the icon again, only the objects of that category will be displayed.
- Click the Navigation icon  to display the Navigation toolbar (Figure 16).

Here you can pick one of the categories and use the **Previous** and **Next** icons to move from one item to the next. This is particularly helpful for finding items like bookmarks and indexes, which can be difficult to see.

- The names of the icons (shown in the tooltips) change to match the selected category; for example, **Next Graphic** or **Next Bookmark**.
- To jump to a specific page in the document, type its page number in the box at the top of the Navigator.

A bit of experimentation with the other icons will demonstrate their functions. Some component-specific uses are described in the chapters on Writer and the other components.

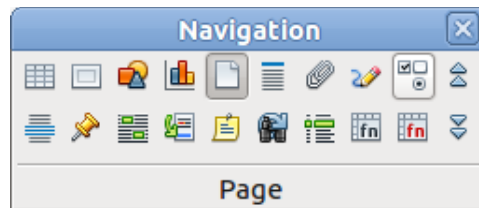


Figure 16: Navigation toolbar

Using the Open and Save As Dialogs

You can choose whether to use the OpenOffice Open and Save As dialogs or the ones provided by your operating system.

To view or change which type of dialog OpenOffice uses:

- 1) Choose **Tools > Options > OpenOffice > General**.
- 2) Select the **Use OpenOffice dialogs** option.

This section discusses the OpenOffice Open and Save As dialogs. Figure 17 shows the Save As dialog; the Open dialog is similar.

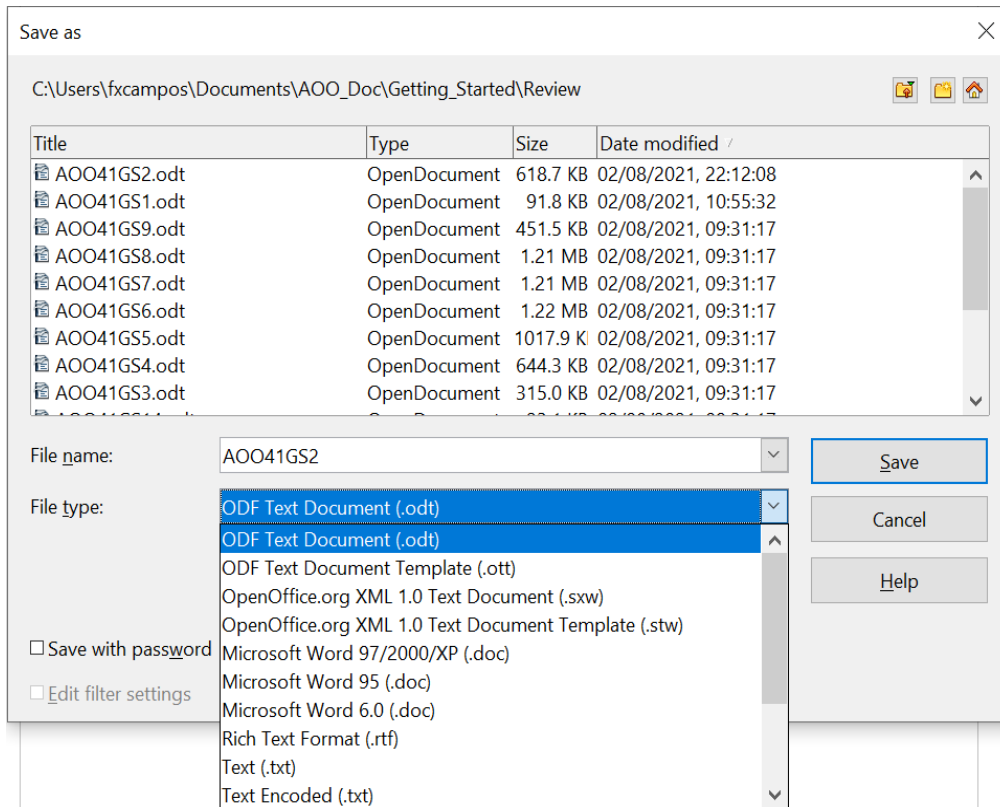


Figure 17: The OpenOffice Save As dialog

The three buttons in the top right of the OpenOffice Open and Save As dialogs are, from left to right:

- **Go Up One Level** in the folder (directory) hierarchy. Click and hold this button for a second to open a list of higher level folders; to go to one of the folders on the list, move the mouse pointer over its name and release the mouse button.
- **Create New Folder.**
- **Default Directory.**

For documents (in OpenDocument format) that have been saved with more than one version, use the **Version** drop-down to select which version you wish to open in read-only mode. For Microsoft Office documents, only the current version can be opened.

Use the **File type** field to specify the type of file to be opened or the format of the file to be saved.

The **Read-only** option on the Open dialog opens the file for reading and printing only. Consequently, most of the toolbars disappear, and most menu options are disabled. An **Edit File** button is displayed on the Standard toolbar to open the file for editing.

You can open files from the Web by typing a URL in the **File name** field on the Open dialog.

Undoing and Redoing Changes

To undo the most recent change, press **Ctrl+Z**, or click the **Undo** icon  on the Standard toolbar, or choose **Edit > Undo** from the menu bar.

The Edit menu shows the latest change that can be undone (see below for an example from Writer).

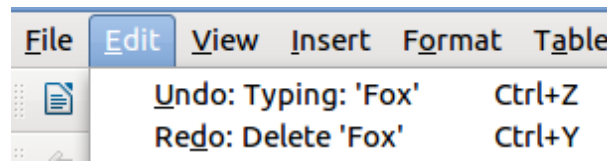


Figure 18: Edit > Undo last action

Click the small triangle to the right of the **Undo** icon to get a list of all the changes that can be undone. You can select multiple changes and undo them at the same time.

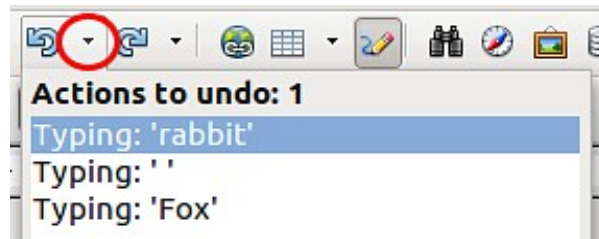


Figure 19: List of actions that can be undone

After changes have been undone, **Redo** becomes active. To redo a change, select **Edit > Redo**, or press *Ctrl+Y* or click on the Redo icon. As with Undo, click on the triangle to the right of the arrow to get a list of the changes that can be reapplied.

To modify the number of changes Apache OpenOffice remembers, choose **Tools > Options > OpenOffice > Memory** and in the Undo section change **Number of steps**. Be aware that asking Apache OpenOffice to remember more changes consumes more computer memory.

Reloading a Document

Reloading is useful in two situations.

- You may want to discard all the changes made in an editing session after the last document save.
- You may have made some formatting changes that do not show until the document has been closed and reopened; reloading has the same result.

To reload a document, go to **File > Reload** on the Menu bar. If you have made changes to a file since the last save, a confirmation dialog will warn you that reloading will discard your last changes. Choose whether to save or discard the changes.

On reloading the document, the File dialog does not open, because the file is already selected.

Closing a Document

To close a document, choose **File > Close**.

You can also close a document by clicking on the **Close** icon on the document window. This button may look like the X shown in Figure 20. It may be in a different location on your operating system.



Figure 20. Close icons

In Windows and Linux, if more than one OpenOffice window is open, each window looks like the sample shown on the left in Figure 20. Closing this window leaves the other OpenOffice windows open.

If only one OpenOffice window is open, it looks like the sample shown on the right in Figure 20. Notice the small X below the large X. Clicking the small X closes the document but leaves OpenOffice open. Clicking the large X closes Apache OpenOffice completely.

If the document has not been saved since the last change, a message box is displayed. Choose whether to save or discard your changes.

- **Save:** The document is saved and then closed.
- **Discard:** The document is closed, and all modifications since the last save are lost.
- **Cancel:** Nothing happens, and you return to the document.

Caution



Not saving your document could result in the loss of recently made changes, or worse still, your entire file.

Closing Apache OpenOffice

To close Apache OpenOffice completely, choose **File > Exit**, or close the last open document as described in “Closing a Document” above.

If all the documents have been saved, Apache OpenOffice closes immediately. If any documents have been modified but not saved, a warning message appears. Follow the procedure in “Closing a Document” to save or discard your changes.