

Apache OpenOffice

Version 4.1

Getting Started

AOO Documentation Team

Copyright

This document is Copyright © 2022 by The Apache Software Foundation. You may distribute it and/or modify it under the terms of the Creative Commons Attribution License, version 3.0 or later (<https://creativecommons.org/licenses/by/3.0/>).

Apache, Apache OpenOffice, and OpenOffice.org are trademarks of the Apache Software Foundation. Used with permission. .

Acknowledgments

This book is updated from *Taming Apache OpenOffice 3.4* (by Jean Hollis Weber), which was adapted from *Getting Started with OpenOffice.org 3.3* (by the OOoAuthors team) with additional material adapted from *Getting Started with LibreOffice 3.4* (by the ODF Authors Team).

Publication date and software version

Published 30. December 2022. Based on Apache OpenOffice 4.1.

Contents

Chapter 11	
Setting Up and Customizing Apache OpenOffice.....	4
Choosing Options for All of Apache OpenOffice.....	4
User Data Options.....	5
General Options.....	6
Memory Options.....	7
View Options.....	8
Print Options.....	10
Path Options.....	11
Color Options.....	12
Font Options.....	14
Security Options.....	14
Appearance Options.....	16
Accessibility Options.....	16
Java Options.....	17
Online Update Options.....	18
Choosing Options for Loading and Saving Documents.....	18
General Load/Save Options.....	19
VBA Properties Load/Save Options.....	20
Microsoft Office Load/Save Options.....	21
HTML Compatibility Load/Save Options.....	21
Choosing Language Settings.....	23
Install the Required Dictionaries.....	23
Change Locale and Language Settings.....	23
Choose Spelling Options.....	25
Choosing Internet Options.....	26
Controlling AutoCorrect Functions.....	26
Customizing Apache OpenOffice.....	28
Customizing Menus.....	28
Customizing Toolbars.....	31
Assigning Shortcut Keys.....	33
Adding Functionality with Extensions.....	36
Installing Extensions.....	36

Chapter 11

Setting Up and Customizing Apache OpenOffice

Choosing Options for All of Apache OpenOffice

This section covers some of the settings that apply to all the components of Apache OpenOffice. For information on settings not discussed here, see the online help.

Click **Tools > Options**, or on macOS **OpenOffice > Preferences**. The list in the left-hand box of the Options - OpenOffice dialog varies depending on which component is open. The illustrations in this chapter show the list as it appears when a Writer document is open.

Click the marker (+ or triangle) by OpenOffice on the left-hand side. A list of pages opens. Selecting an item in the list causes the right-hand side of the dialog to display the relevant page.

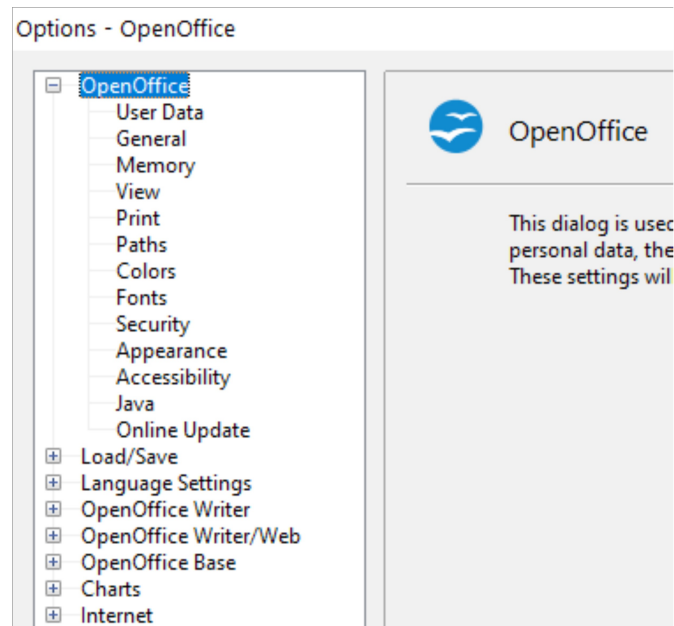


Figure 1: OpenOffice options

Note

The **Back** button has the same effect on all pages of the Options dialog. It resets the options to the values that were in place when you opened Apache OpenOffice.

User Data Options

The name or initials stored in the OpenOffice - User Data page are used for several things, including document properties (created by and last edited by information) and the name of the author of notes and changes. You should ensure that the correct information appears here. Fill in the form (shown in Figure 2), or amend or delete any existing incorrect information.

Address		
Company	<input type="text"/>	
First/Last name/Initials	Jean	Weber JHW
Street	<input type="text"/>	
City/State/Zip	<input type="text"/>	<input type="text"/>
Country/Region	<input type="text"/>	
Title/Position	<input type="text"/>	<input type="text"/>
Tel. (Home/Work)	<input type="text"/>	<input type="text"/>
Fax / E-mail	<input type="text"/>	<input type="text"/>

Figure 2: Filling in user data

General Options

The options on the *OpenOffice - General* page are described below.

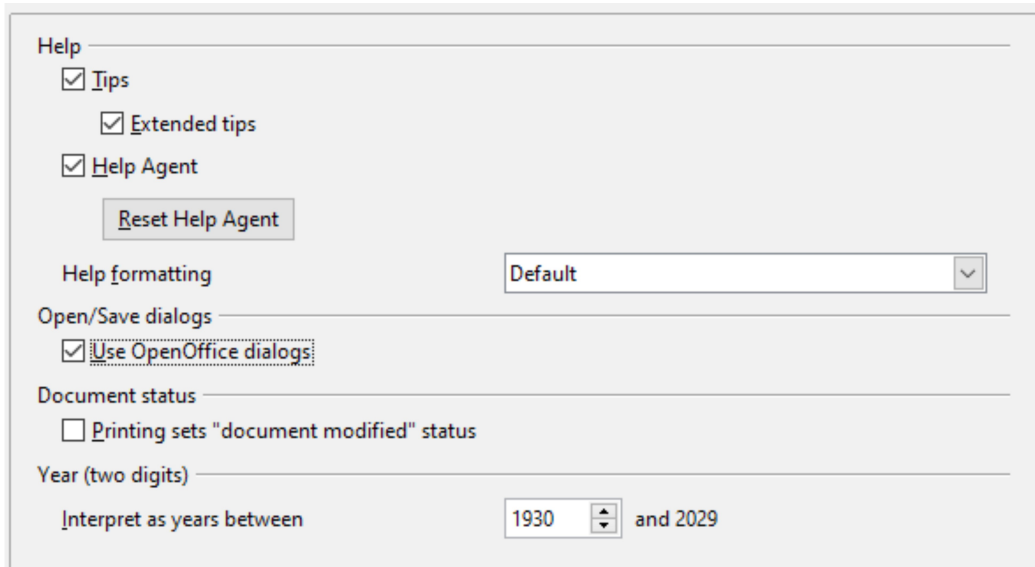


Figure 3: Setting general options for OpenOffice

Help—Tips

When *Tips* is active, one or two words will appear when you hold the mouse pointer over an icon or field, without clicking.

Help—Extended tips

When *Extended tips* are active, a brief description of the function of a particular icon or menu command or a field on a dialog appears when you hold the mouse pointer over that item.

Help Agent

To turn off the *Help Agent*, deselect this option. To restore the default behavior, click **Reset Help Agent**.

Help formatting

High contrast is an operating system setting that changes the system color scheme to improve readability. To display Help in high contrast (if your computer's operating system supports this), choose one of the high-contrast style sheets from the pull-down list.

High-contrast style	Visual effect
Default	Black text on white background
High Contrast #1	Yellow text on black background
High Contrast #2	Green text on black background
High Contrast Black	White text on black background
High Contrast White	Black text on white background

Open/Save dialogs

To use the standard Open and Save dialogs for your operating system, deselect the **Use OpenOffice dialogs** option. When this option is selected, the Open and Save dialogs supplied with OpenOffice will be used. See Chapter 1 (Introducing Apache OpenOffice) for more about the OpenOffice Open and Save dialogs. This book uses the *OpenOffice Open and Save* dialogs in illustrations.

Print dialogs—Use OpenOffice dialogs

(macOS only) To use the standard Print dialogs for your operating system, deselect the **Use OpenOffice dialogs** option. When this option is selected, the Print dialogs supplied with OpenOffice will be used. This book uses the *OpenOffice Print* dialogs in illustrations.

Document Status

If this option is selected, then the next time you close the document after printing, the print date is recorded in the document properties as a change, and you will be prompted to save the document again, even if you did not make any other changes.

Year (two digits)

Specifies how two-digit years are interpreted. For example, if the two-digit year is set to 1930, and you enter a date of 1/1/30 or later into your document, the date is interpreted as 1/1/1930 or later. An “earlier” date is interpreted as being in the following century; that is, 1/1/20 is interpreted as 1/1/2020.

Memory Options

In the Options dialog, click **OpenOffice > Memory**.

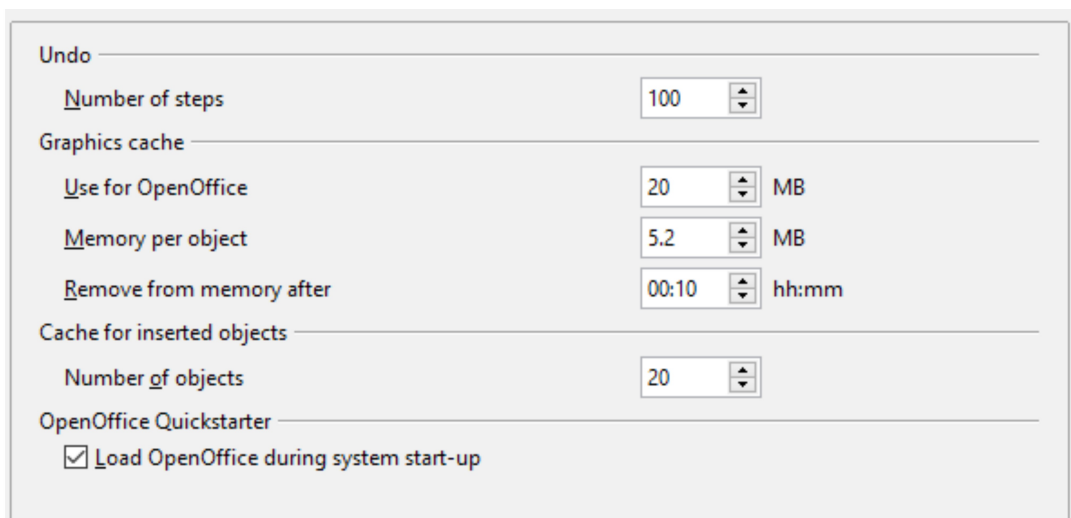


Figure 4: Choosing Memory options for OpenOffice

These options control how the program uses your computer’s memory and how much memory it requires. Before changing them, you may wish to consider the following points:

- More memory can make Apache OpenOffice faster and more convenient (for example, more undo steps require more memory); but the trade-off is less memory available for other applications, and you could run out of memory altogether.
- If your documents contain a lot of objects such as images, or the objects are large, Apache OpenOffice’s performance may improve if you increase the

memory for OpenOffice or the memory per object. If you find that objects seem to disappear from a document that contains a lot of them, increase the number of objects in the cache. (The objects are still in the file even if you cannot see them on screen.)

- To load the Quickstarter (an icon on the desktop or in the system tray) when you start your computer, select the option near the bottom of the dialog. This makes Apache OpenOffice start faster; the trade-off is that AOO uses some memory even when not being used. This option (sometimes called **Enable systray quickstarter**) is not available on all operating systems.

View Options

The options on the OpenOffice - View page affect the way the document window looks and behaves. Some of these options are described below. Set them to suit your personal preferences.

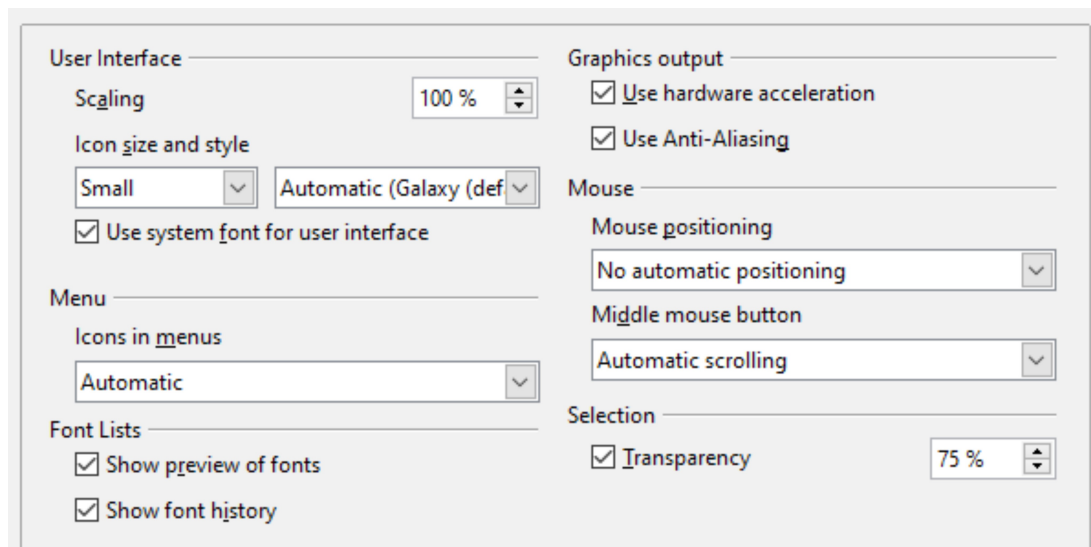


Figure 5: Choosing View options for AOO applications

User Interface—Scaling

If the text in the help files or on the menus of the AOO user interface is too small or too large, you can change it by specifying a scaling factor. Sometimes a change here can have unexpected results, depending on the screen fonts available on your system. However, it does not affect the actual font size of the text in your documents.

User Interface—Icon size and style

The first box specifies the display size of toolbar icons (Automatic, Small, or Large). The Automatic icon size option uses the setting for your operating system. The second box specifies the icon style (theme); here the Automatic option uses an icon set compatible with your operating system and choice of desktop: for example, KDE or Gnome on Linux.

User Interface—Use system font for user interface

If you prefer to use the system font (the default font for your computer and operating system) instead of the font provided by AOO for the user interface, select this option.

User interface—Screen font anti-aliasing

(Not available in Windows; not shown in Figure 5.) Select this option to smooth the screen appearance of text. Enter the smallest font size to apply anti-aliasing.

Menu—Icons in menus

Causes icons as well as words to be visible in menus.

Font Lists—Show preview of fonts

Causes the font list to look like Figure 6, Left, with the font names shown as an example of the font; with the option deselected, the font list shows only the font names, not their formatting (Figure 6, Right). The fonts you will see listed are those that are installed on your system.

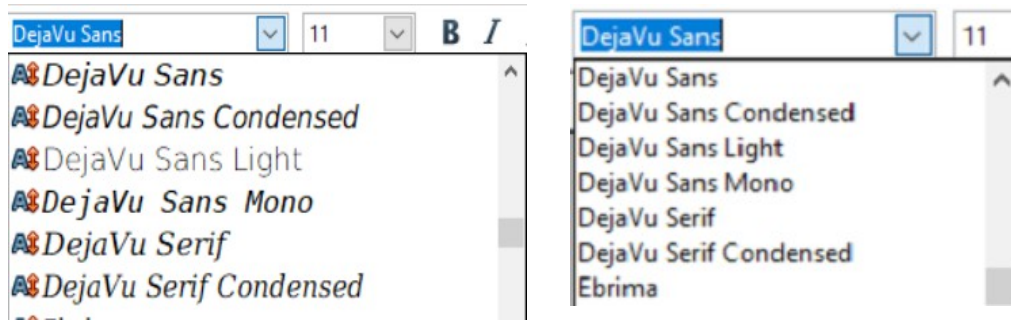


Figure 6: Font list (Left) With preview; (Right) Without preview

Font Lists—Show font history

Causes the last five fonts you have assigned to the current document to be displayed at the top of the font list. Otherwise, fonts are shown in alphabetical order.

Graphics output—Use hardware acceleration

Directly accesses hardware features of the graphical display adapter to improve the screen display. Not supported on all operating systems and AOO distributions.

Graphics output—Use anti-aliasing

Enables and disables anti-aliasing, which makes the display of most graphical objects look smoother and with fewer artifacts. Not supported on all operating systems and AOO distributions.

Tip

Press Shift+Ctrl+R to restore or refresh the view of the current document.

Mouse positioning

Specifies if and how the mouse pointer will be positioned in newly opened dialogs.

Middle mouse button

Defines the function of the middle mouse button.

- **Automatic scrolling—dragging** while pressing the middle mouse button shifts the view.
- **Paste clipboard—pressing** the middle mouse button inserts the contents of the “Selection clipboard” at the cursor position.

The “Selection clipboard” is independent of the normal clipboard that you use by **Edit > Copy/Cut/Paste** or their respective keyboard shortcuts. Clipboard and “Selection clipboard” can contain different contents at the same time.

Function	Clipboard	Selection clipboard
Copy content	Edit > Copy Ctrl+C	Select text, table, or object.
Paste content	Edit > Paste Ctrl+V pastes at the cursor position.	Clicking the middle mouse button pastes at the mouse pointer position.
Pasting into another document	No effect on the clipboard contents.	The last marked selection is the content of the selection clipboard.

Selection—Transparency

Determines the appearance of selected text or graphics, which appear on a shaded background. To make the shaded background more or less dark, increase or decrease the Transparency setting.

If you prefer selected material to appear in reversed color (typically white text on a black background), deselect this option.

Print Options

On the OpenOffice - Print page, set the print options to suit your default printer and your most common printing method.

In the *Printer warnings* section near the bottom of the page, you can choose whether to be warned if the paper size or orientation specified in your document does not match the paper size or orientation available for your printer. Having these warnings turned on can be quite helpful, particularly if you work with documents produced by people in other countries where the standard paper size is different from yours.

Tip

If your printouts are incorrectly placed on the page or chopped off at the top, bottom, or sides, or the printer is refusing to print, the most likely cause is page size incompatibility.

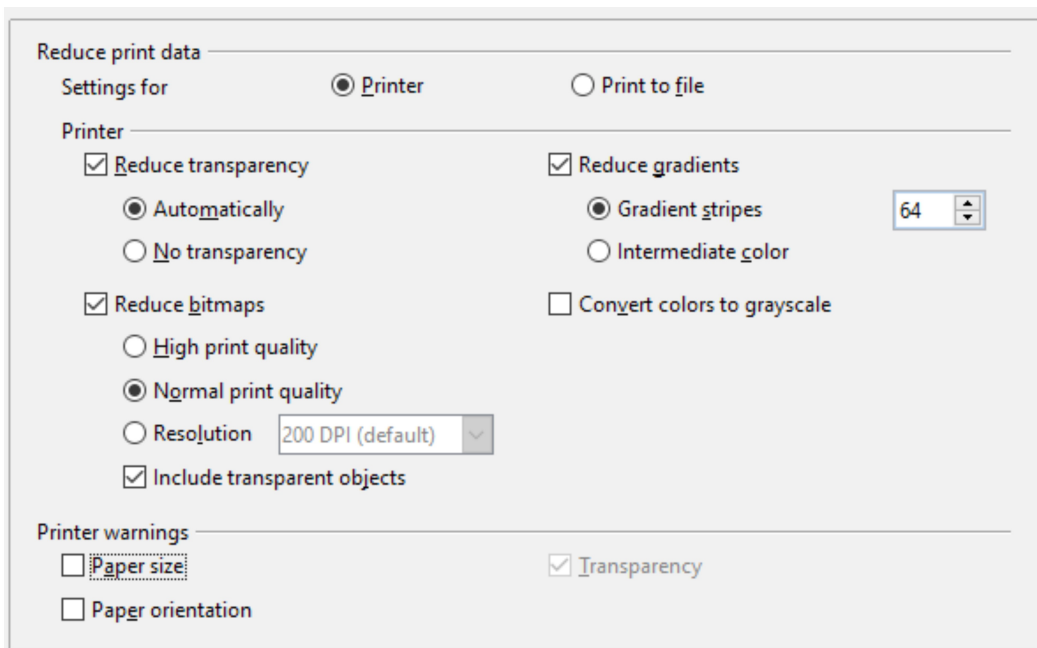


Figure 7: Choosing general printing options to apply to all AOO components

Path Options

On the OpenOffice – Paths page, you can change the location of files associated with, or used by, OpenOffice to suit your working situation. In a Windows system, for example, you might want to store documents by default somewhere other than Documents folder.

To make changes, select an item in the list shown in Figure 8 and click **Edit**. On the Select Path dialog (not shown; may also be titled Edit Paths), add or delete folders as required, and then click **OK** to return to the Options dialog. Note that some items can have at least two paths listed: one to a shared folder (which might be on a network) and one to a user-specific folder (normally on the user’s personal computer).

Tip

You can use the entries in the OpenOffice – Paths dialog to compile a list of files, such as those containing AutoText, that you need to back up or copy to another computer.

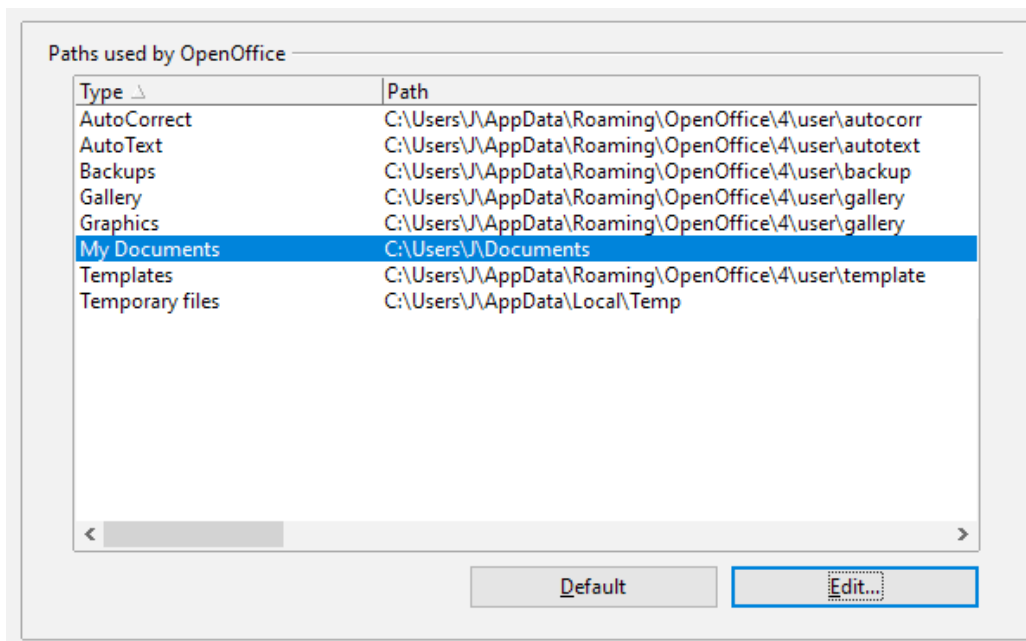


Figure 8: Viewing the paths of files used by OpenOffice

Color Options

On the OpenOffice – Colors page, you can specify colors to use in AOO documents. You can select a color from a color table, edit an existing color, and define new colors. These colors are stored in your color palette and are then available in all components of AOO.

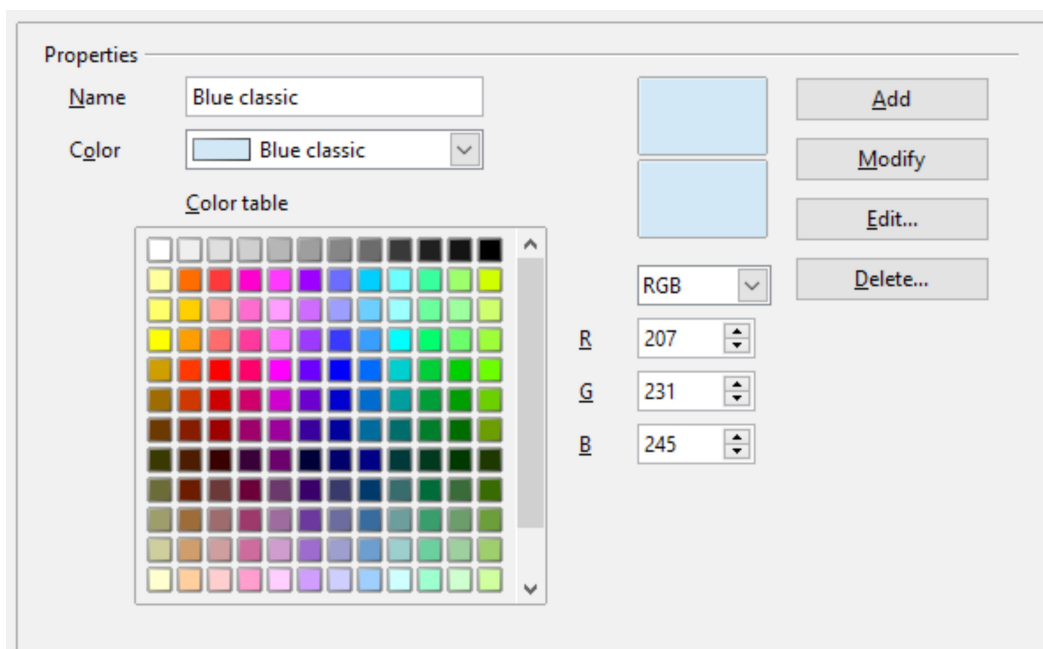


Figure 9: Defining colors to use in color palettes in AOO

To modify a color:

- 1) Select the color to modify from the list or the color table.
- 2) Enter the new values that define the color. If necessary, change the settings from RGB (Red, Green, Blue) to CMYK (Cyan, Magenta, Yellow, Black) or vice

versa. The changed color appears in the lower of the two color preview boxes at the top.

- 3) Modify the *Name* as required.
- 4) Click the **Modify** button. The newly defined color is now listed in the Color table.

Alternatively, click the **Edit** button to open the Color Picker dialog, shown in Figure 10. Here you can select a color from the color window on the left; or you can enter values in the boxes on the right, using your choice of RGB, CMYK, or HSB (Hue, Saturation, and Brightness) values.

The color window is linked directly with the color input fields on the right; as you choose a color in the window, the numbers change accordingly. The lower color field on the left shows the value of the selected color on the left and the currently set value from the color value fields on the right.

Modify the color components as required and click **OK** to exit the dialog. The newly defined color now appears in the lowest of the color preview boxes shown in Figure 9. Type a name for this color in the *Name* box, then click the **Add** button. A small box showing the new color is added to the Color table.

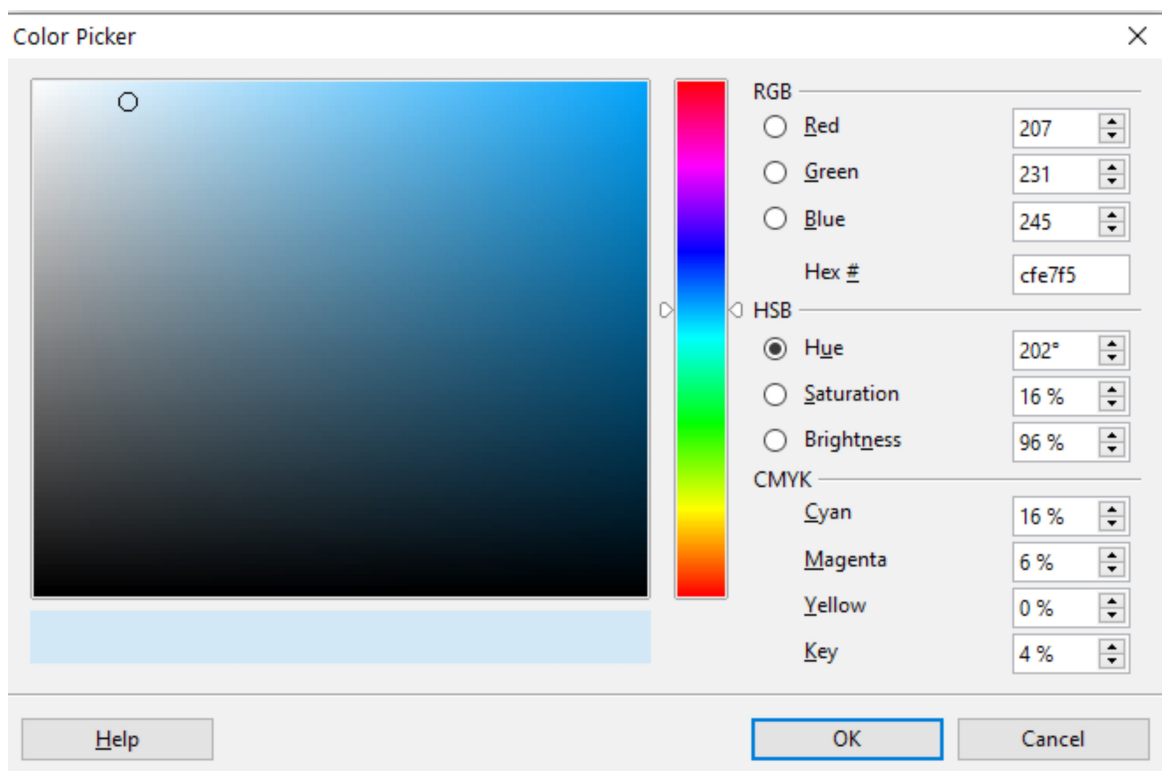


Figure 10: Choosing colors

Another way to define or alter colors is through the Colors page of the Area dialog, where you can also save and load palettes, a feature that is not possible here. In Calc, draw a temporary draw object and use the context menu of this object to open the Area dialog. If you load a palette in one component of AOO, it is only active in that component; the other components keep their own palettes.

Font Options

You can define replacements for any fonts that might appear in your documents. If you receive from someone else a document containing fonts that you do not have on your system, OpenOffice will substitute fonts for those it does not find. You might prefer to specify a different font from the one the program chooses.

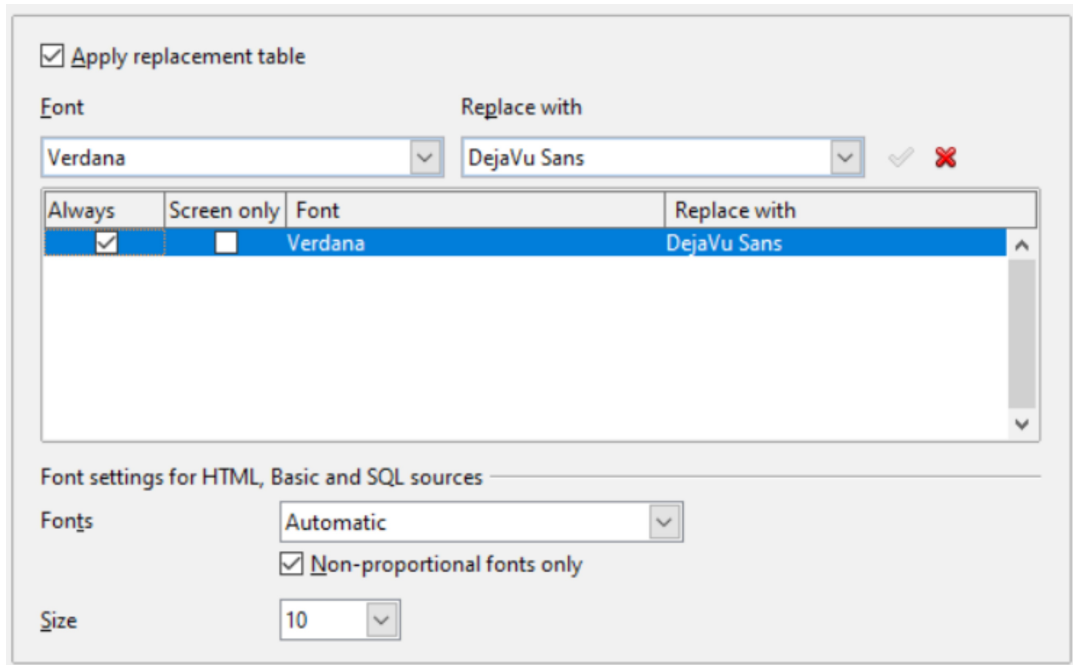


Figure 11: Defining a font to be substituted for another font

On the OpenOffice - Fonts page:

- 1) Select the **Apply Replacement Table** option.
- 2) Select or type the name of the font to be replaced in the **Font** box. (If you do not have this font on your system, it will not appear in the drop-down list in this box, so you need to type it in.)
- 3) In the **Replace with** box, select a suitable font from the drop-down list of fonts installed on your computer.
- 4) The checkmark to the right of the **Replace with** box turns green. Click on this checkmark. A row of information now appears in the larger box below the input boxes. Select the options under **Always** and **Screen**.
- 5) In the bottom section of the page, you can change the typeface and size of the font used to display source code such as HTML and Basic (in macros).

Security Options

Use the OpenOffice - Security page (Figure 12) to choose security options for saving documents and for opening documents that contain macros.

Security options and warnings

If you record changes, save multiple versions, or include hidden information or notes in your documents, and you do not want some recipients to see that information, you can set warnings to remind you to remove it, or you can have AOO remove some of it automatically. Note that (unless removed) much of this information is retained in a file whether the file is in AOO's default OpenDocument format, or has been saved to other formats, including PDF.

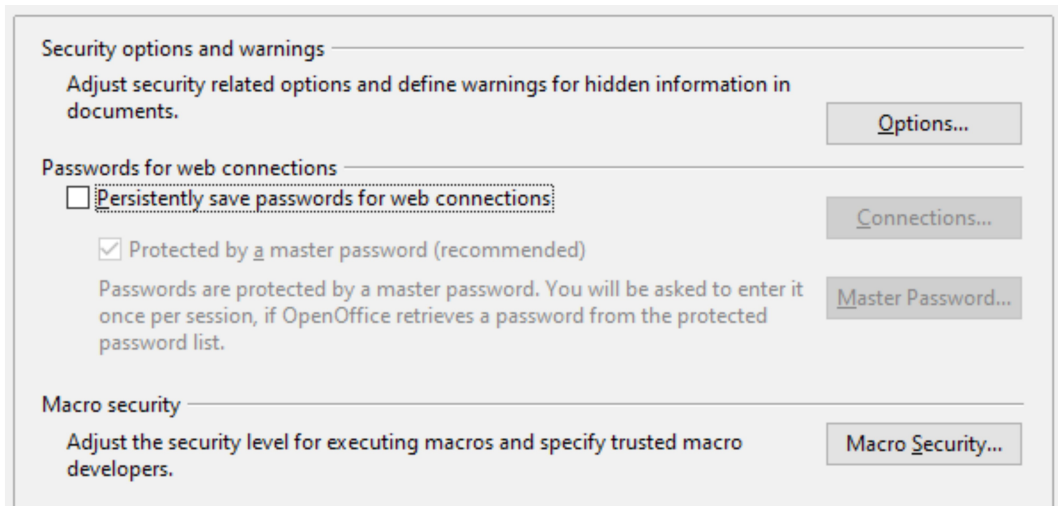


Figure 12: Choosing security options for opening and saving documents

Click the **Options** button to open a separate dialog with specific choices (Figure 13).

Macro security

Click the **Macro Security** button to open the Macro Security dialog (not shown here), where you can adjust the security level for executing macros and specify trusted sources.

Security Options and Warnings

The following options are on the Security options and warnings dialog (Figure 13).

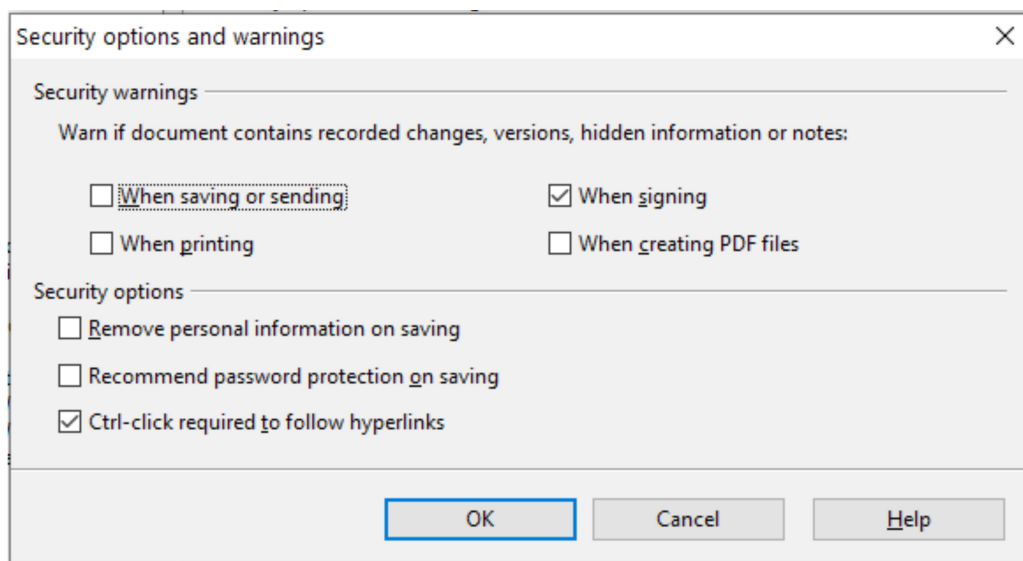


Figure 13: Security options and warnings dialog

Remove personal information on saving

Select this option to always remove user data from the file properties when saving the file. To manually remove personal information from specific documents, deselect this option and then use the **Delete** button under **File > Properties > General**.

Ctrl-click required to follow hyperlinks

Many people find creation and editing of documents easier when accidental clicks on links do not activate the links.

The other options on this dialog should be self-explanatory.

Appearance Options

Writing, editing, and (especially) page layout are often easier when you can see the page margins (text boundaries), the boundaries of tables and sections (in Writer documents), page breaks in Calc, grid lines in Draw or Writer, and other features. In addition, you might prefer to use colors that are different from AOO's defaults for such items as note indicators or field shadings.

On the OpenOffice—Appearance page, you can specify which items are visible, and the colors used to display various items.

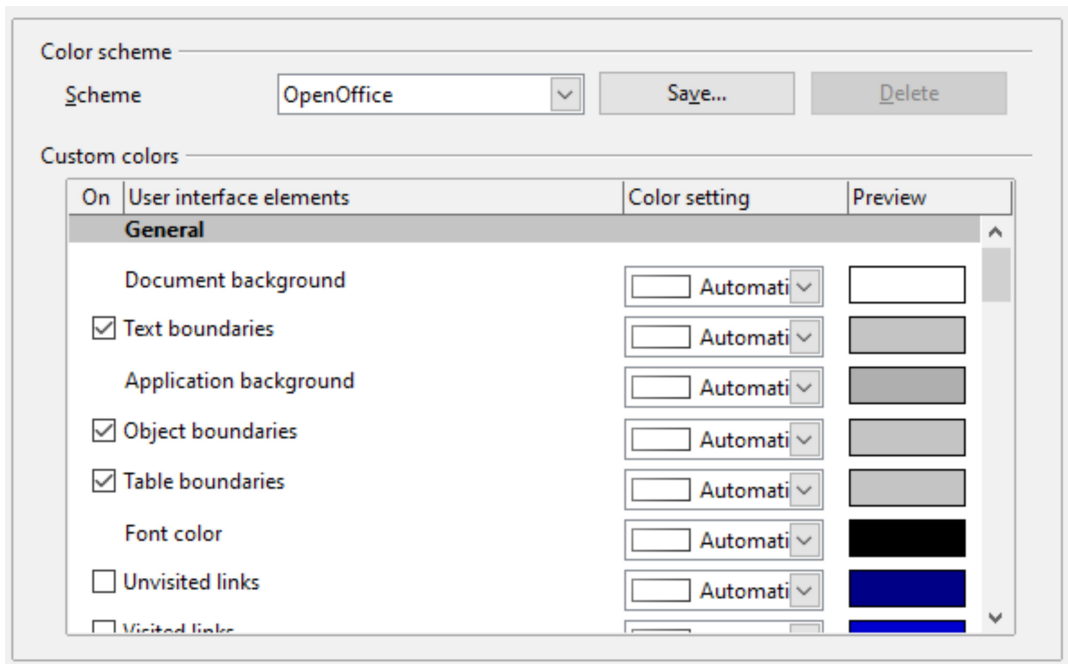


Figure 14: Showing or hiding text, object, and table boundaries

- To show or hide items such as text boundaries, select or deselect the options next to the names of the items.
- To change the default colors for items, click the down-arrow in the *Color Setting* column by the name of the item and select a color from the pop-up box.
- To save your color changes as a color scheme, click **Save**, type a name in the *Scheme* box; then click **OK**.

Accessibility Options

Accessibility options include whether to allow animated graphics or text, how long help tips remain showing, some options for high contrast display, and a way to change the font for the user interface of the OpenOffice program.

Accessibility support relies on Java technology for communications with assistive technology tools. See Java Options below. The *Support assistive technology tools* option is not shown on all AOO installations. See *Assistive Tools in OpenOffice* in the Help for other requirements and information.

Select or deselect the options as required.

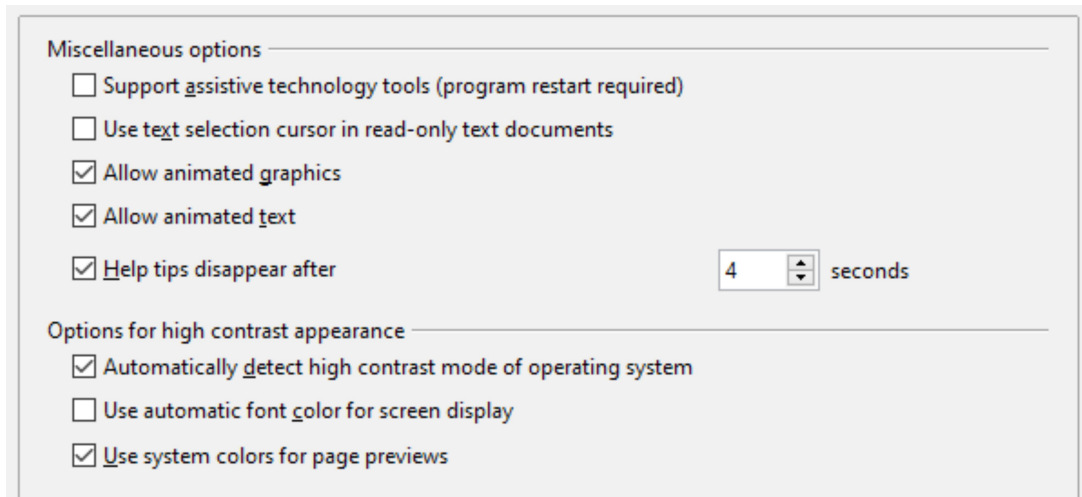


Figure 15: Choosing accessibility options

Java Options

If you install or update a Java Runtime Environment (JRE) after you install OpenOffice, or if you have more than one JRE installed on your computer, you can use the OpenOffice—Java options page to choose the JRE for AOO to use.

If you are a system administrator, programmer, or other person who customizes JRE installations, you can use the Parameters and Class Path pages (reached from the Java page) to specify this information.

If you do not see anything listed in the middle of the page, wait a few seconds while AOO searches for JREs on the hard disk.

If AOO finds one or more JREs, it will display them there. You can then select the **Use a Java runtime environment** option and (if necessary) choose one of the JREs listed.

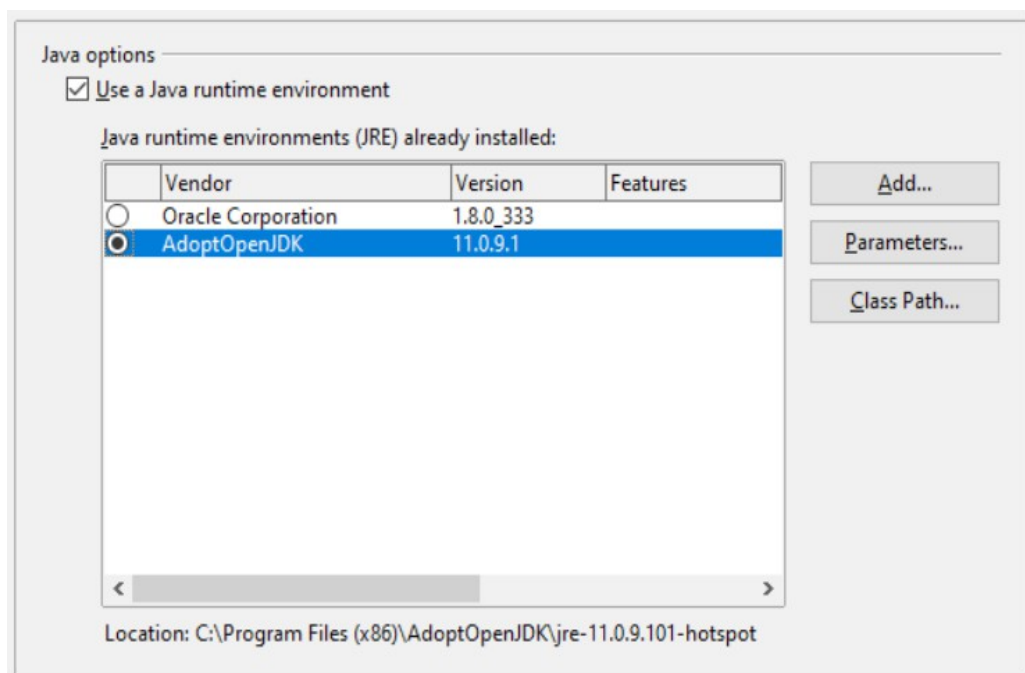


Figure 16: Choosing a Java runtime environment

Online Update Options

On the OpenOffice—Online Update page, you can choose whether and how often to have AOO check the AOO website for program updates. If the **Check for updates automatically** option is selected, an icon appears at the right-hand end of the menu bar when an update is available. Click this icon to open a dialog where you can decide to download the update.

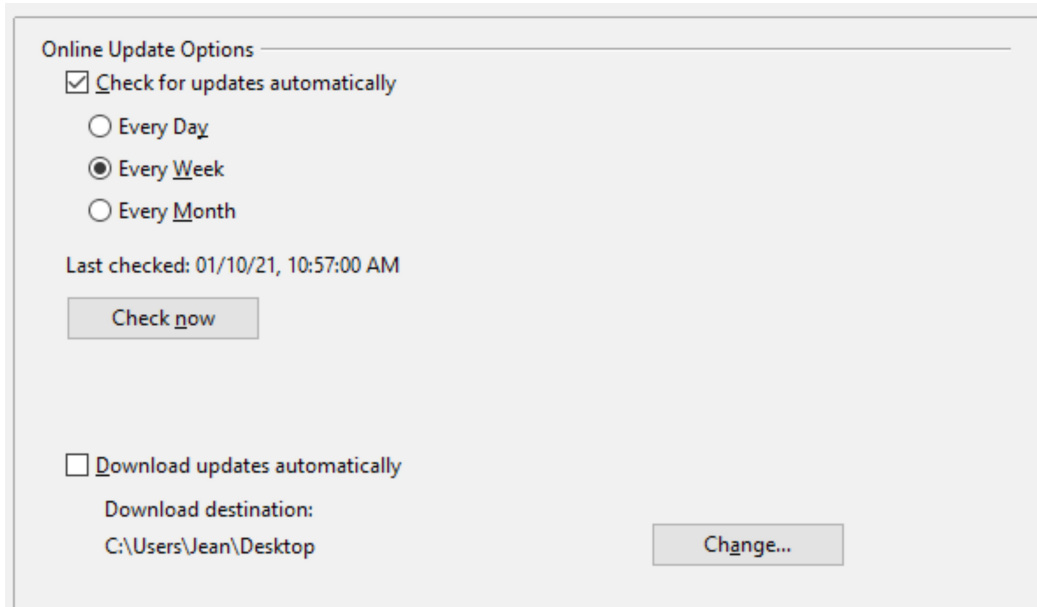


Figure 17: Configuring Online Update

If the **Download updates automatically** option is selected, the download starts when you click the icon. To change the download destination, click the **Change** button and select the required folder in the file browser window.

Choosing Options for Loading and Saving Documents

You can set the Load/Save options to suit the way you work.

If the Options' dialog is not already open, click **Tools > Options**. Click the expansion symbol (+ or triangle) to the left of **Load/Save**.

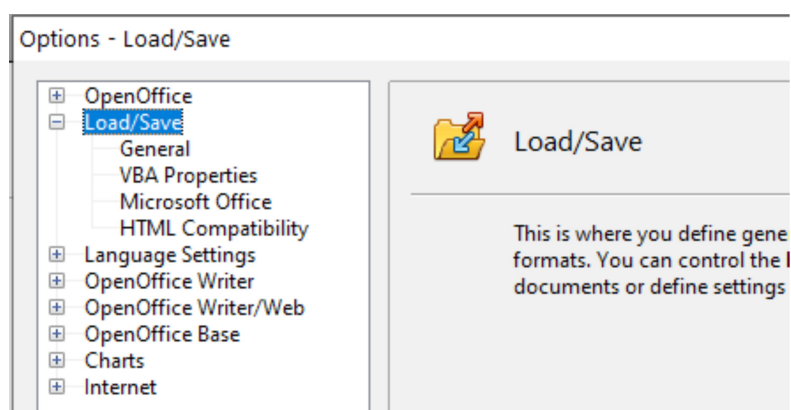


Figure 18: Load/Save options

General Load/Save Options

Most of the choices on the Load/Save—General page are familiar to users of other office suites. Some items of interest are described below.

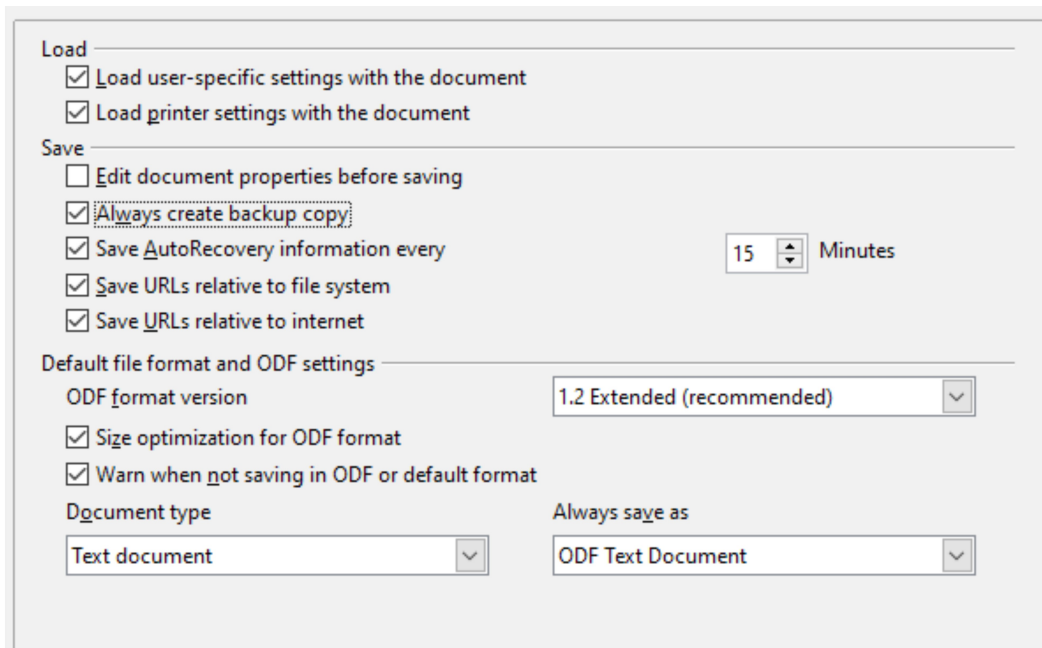


Figure 19: Choosing Load and Save options

Load user-specific settings with the document

When you save a document, certain settings are saved with it. Some settings (printer name, data source linked to the document) are always loaded with a document, whether this option is selected. If you select this option, these document settings are overruled by the user-specific settings of the person who opens it. If you deselect this option, the user's personal settings do not overrule the settings in the document. For example, your choice (in the options for Writer) of how to update links is affected by the **Load user-specific settings** option.

Load printer settings with the document

If this option is **not** selected, the printer settings that are stored with the document are ignored when you print it using the **Print File Directly** icon. The default printer in your system will be used instead.

Edit document properties before saving

If you select this option, the Document Properties dialog pops up to prompt you to enter relevant information the first time you save a new document (or whenever you use **Save As**).

Save AutoRecovery information every

Choose whether to enable AutoRecovery and how often to save the information used by the AutoRecovery process.

AutoRecovery writes a temporary file that can be used to recover unsaved work if OpenOffice should crash. This does not overwrite the original file, and it is not a substitute for saving your work periodically.

Save URLs relative to file system / internet

Relative addressing to a file system is only possible if the source document and the referenced document are both on the same drive. A relative address always

starts from the directory in which the current document is located. It is recommended to save relatively if you want to create a directory structure on an Internet server.

Default file format and ODF settings

ODF format version.

AOO by default saves documents in OpenDocument Format (ODF) version 1.2 Extended. While this allows for improved functionality, there may be backwards compatibility issues. When a file saved in ODF 1.2 Extended is opened in an earlier version of OpenOffice (using ODF 1.0/1.1), some advanced features may be lost. Two notable examples are cross-references to headings and the formatting of numbered lists. If you plan to share documents with people who are still using very old versions of OpenOffice, save the document using ODF version 1.0/1.1.

Size optimization for ODF format.

OpenOffice's documents are XML files. When you select this option, AOO writes the XML data without indents and line breaks. If you want to be able to read the XML files in a text editor in a structured form, deselect this option.

Document type.

If you routinely share documents with users of Microsoft Office, you might want to change the **Always save as** attribute for documents to one of the Microsoft Office formats. The more complicated the documents are, the more likely that the formatting of the non-native file type will be imperfect.

Note

Although AOO can open files in the .docx, .xlsx, and .pptx formats produced by Microsoft Office 2007 and later versions, it cannot save in those formats.

VBA Properties Load/Save Options

On the Load/Save - VBA Properties page, you can choose whether to keep any macros in Microsoft Office documents that are opened in OpenOffice.

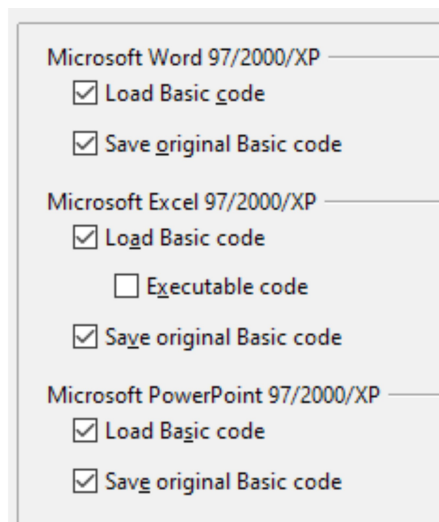


Figure 20: Choosing Load/Save VBA Properties

- If you choose **Save original Basic code**, the macros will not work in AOO but are retained if you save the file into Microsoft Office format.
- If you choose **Load Basic code to edit**, the changed code is saved in an AOO document but is not retained if you save into a Microsoft Office format.
- If you are importing a Microsoft Excel file containing VBA code, you can select the option **Executable code**. Whereas normally the code is preserved but rendered inactive (if you inspect it with the StarBasic IDE you will notice that it is all commented), with this option the code is ready to be executed.

Microsoft Office Load/Save Options

On the Load/Save - Microsoft Office page, you can choose what to do when importing and exporting Microsoft Office OLE objects (linked or embedded objects or documents such as spreadsheets or equations).

Select the [L] options to convert Microsoft OLE objects into the corresponding OpenOffice OLE objects when a Microsoft document is loaded into AOO (mnemonic: "L" for "load").

Select the [S] options to convert OpenOffice OLE objects into the corresponding Microsoft OLE objects when a document is saved in a Microsoft format (mnemonic: "S" for "save").

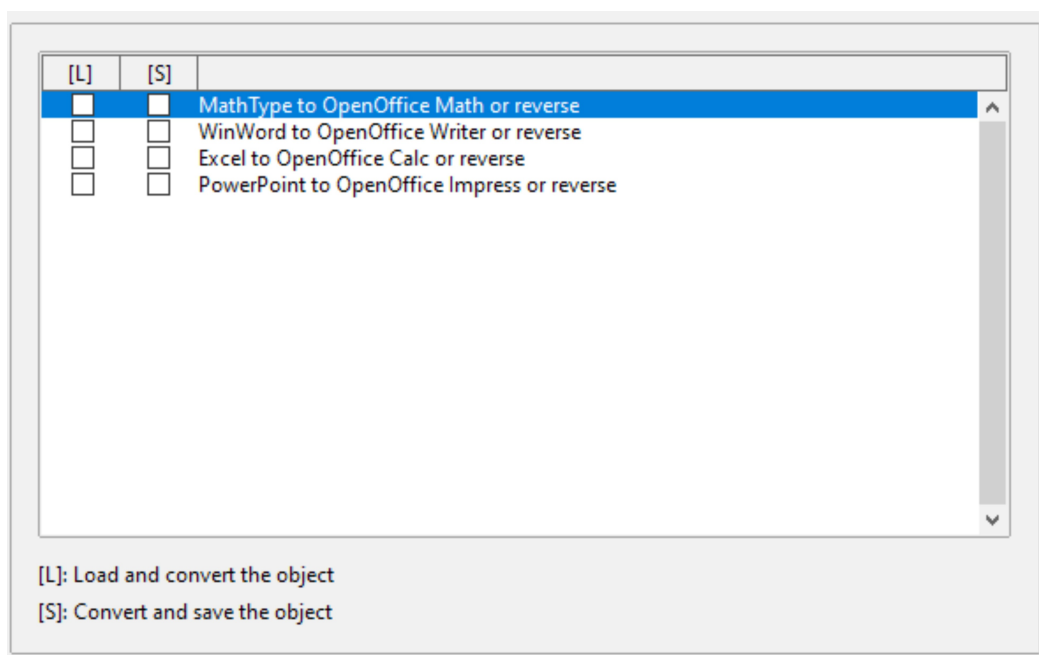


Figure 21: Choosing Load/Save Microsoft Office options

HTML Compatibility Load/Save Options

Choices made on the Load/Save - HTML Compatibility page affect HTML pages imported into OpenOffice and those exported from AOO. See *HTML documents; importing/exporting* in the Help for more information.

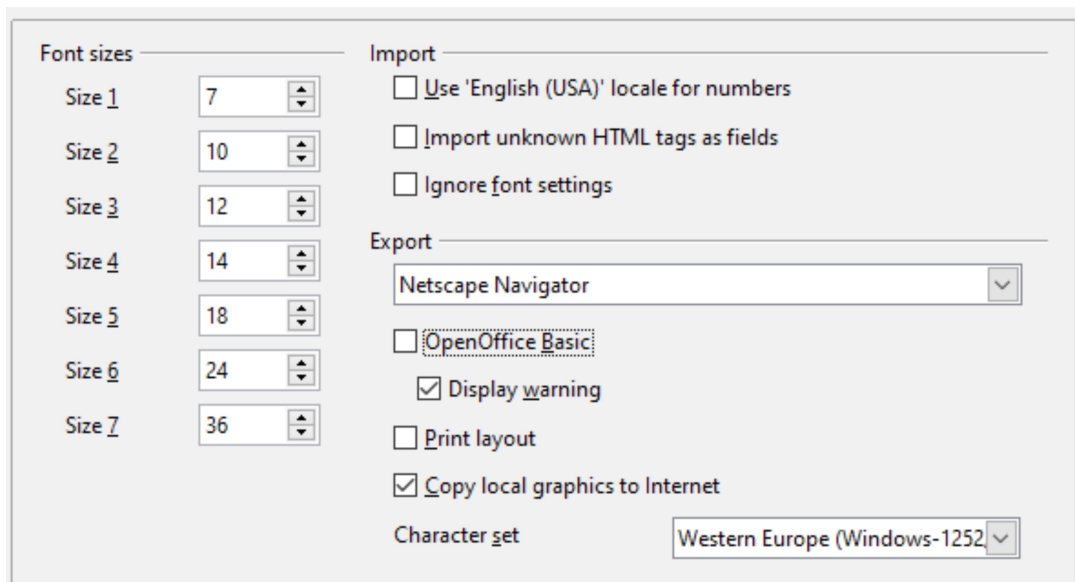


Figure 22. Choosing HTML compatibility options

Font sizes

Use these fields to define the respective font sizes for the HTML `` to `` tags, if they are used in the HTML pages. (Many pages no longer use these tags.)

Import—Use 'English (USA)' locale for numbers

When importing numbers from an HTML page, the decimal and thousands separator characters differ according to the locale of the HTML page. The clipboard, however, contains no information about the locale. If this option is **not** selected, numbers will be interpreted according to the **Language of—Locale setting** in **Tools > Options > Language Settings > Languages** (see page 23). If this option is selected, numbers will be interpreted as for the English (USA) locale.

Import - Import unknown HTML tags as fields

Select this option if you want tags that are not recognized by AOO to be imported as fields. For an opening tag, an HTML_ON field will be created with the value of the tag name. For a closing tag, an HTML_OFF will be created. These fields will be converted to tags in the HTML export.

Import - Ignore font settings

Select this option to have AOO ignore all font settings when importing. The fonts that were defined in the HTML Page Style will be used.

Export

To optimize the HTML export, select a browser or HTML standard from the **Export** box. If OpenOffice Writer is selected, specific OpenOffice Writer instructions are exported.

Export—OpenOffice Basic

Select this option to include AOO Basic macros (scripts) when exporting to HTML format. You must activate this option *before* you create the OpenOffice Basic macro; otherwise the script will not be inserted. OpenOffice Basic macros must be located in the header of the HTML document. Once you have created the macro in the OpenOffice Basic IDE, it appears in the source text of the HTML document in the header.

If you want the macro to run automatically when the HTML document is opened, choose **Tools > Customize > Events**.

Export—Display warning

When the **OpenOffice Basic** option (see above) is *not* selected, the **Display warning** option becomes available. If the **Display warning** option is selected, then, when exporting to HTML, a warning is shown that OpenOffice Basic macros will be lost.

Export—Print layout

Select this option to export the print layout of the current document as well. The HTML filter supports CSS2 (Cascading Style Sheets Level 2) for printing documents. These capabilities are only effective if print layout export is activated.

Export—Copy local graphics to Internet

Select this option to automatically upload the embedded pictures to the Internet server when uploading using FTP.

Export—Character set

Select the appropriate character set for the export.

Choosing Language Settings

You may need to do several things to set the language settings to what you want:

- Install the required dictionaries
- Change some locale and language settings
- Choose spelling options

Install the Required Dictionaries

AOO automatically installs several dictionaries with the program. To add other dictionaries, be sure you are connected to the Internet, and then use **Tools > Language > Get more Dictionaries Online**. AOO will open your default web browser to a page containing links to additional dictionaries that you can install. Follow the prompts to select and install the ones you want.

Change Locale and Language Settings

You can change some details of the locale and language settings that AOO uses for all documents, or for specific documents.

In the Options dialog, click **Language Settings > Languages**.

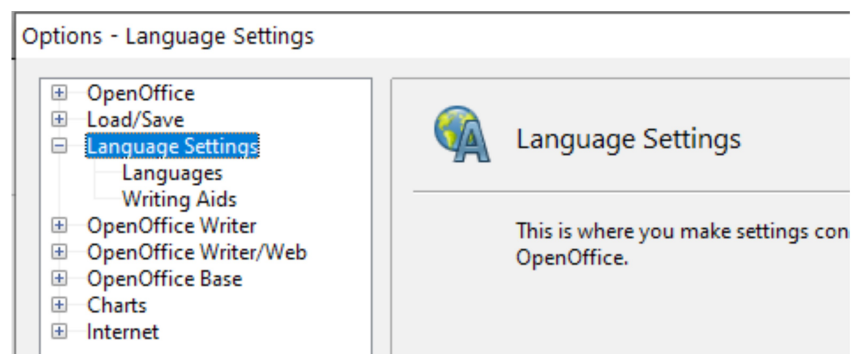


Figure 23: Language Setting options

On the right-hand side of the Language Settings - Languages page (Figure 25), change the *User interface*, *Locale setting*, *Default currency*, and *Default languages for documents* as required. In the example, English (USA) has been chosen for all the appropriate settings.

If you want the language (dictionary) setting to apply to the current document only, instead of being the default for all new documents, select the option labeled *For the current document only*.

If necessary, select the options to enable support for Asian languages (Chinese, Japanese, Korean) and support for CTL (complex text layout) languages such as Urdu, Thai, Hebrew, and Arabic. If you choose either of these options, the next time you open this dialog, you will see some extra choices under Language Settings, as shown in Figure 24. These choices (*Searching in Japanese*, *Asian Layout*, and *Complex Text Layout*) are not discussed here.

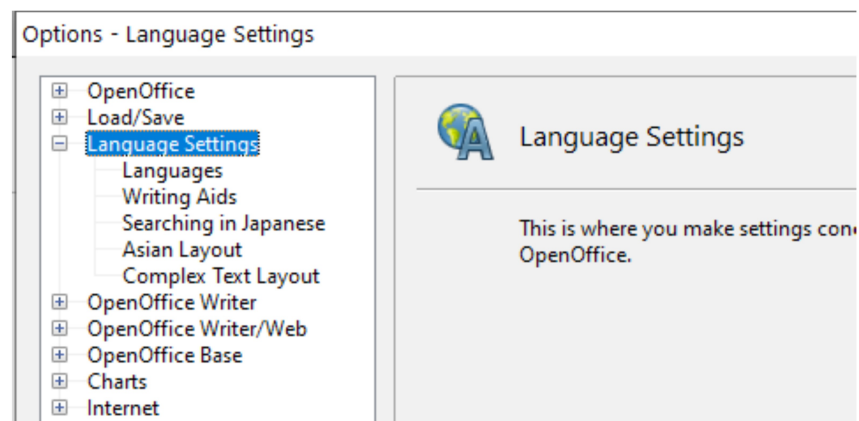


Figure 24: Extra pages available when enhanced language support options are selected

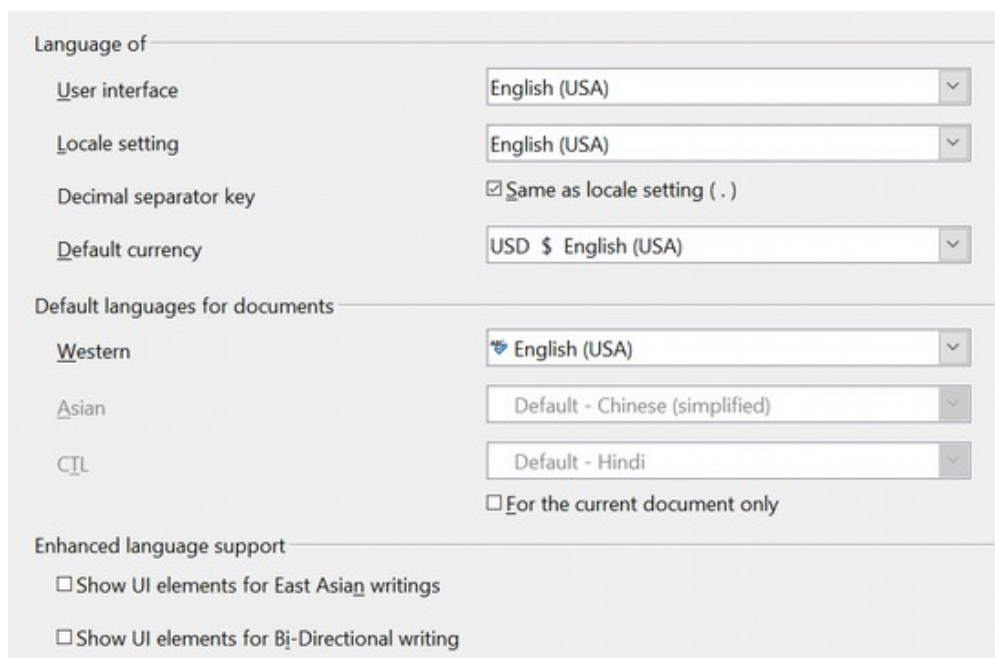


Figure 25: Choosing language options

Choose Spelling Options

To choose the options for checking spelling, click **Language Settings > Writing Aids**. In the *Options* section of the page (Figure 26), select the settings that are useful for you.

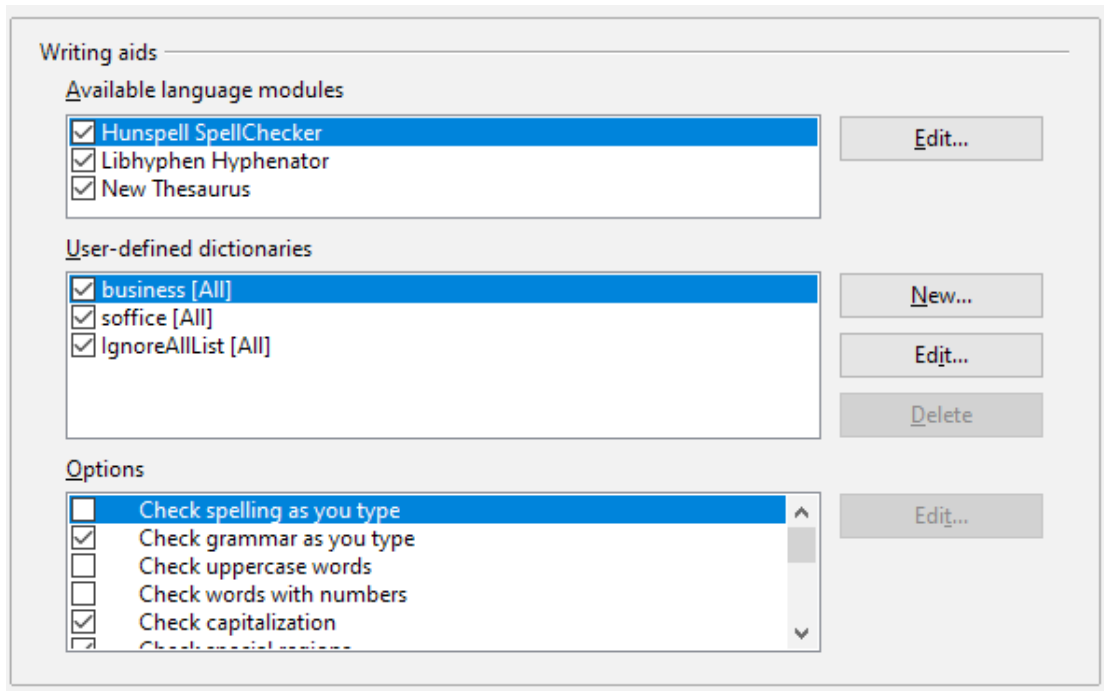


Figure 26: Choosing languages, dictionaries, and options for checking spelling

Some considerations:

- If you do not want spelling checked while you type, deselect **Check spelling as you type** and select **Do not mark errors**. (To find the second item, scroll down in the Options list.)
- If you use a custom dictionary that includes words in all upper case and words with numbers (for example, AS/400), select **Check uppercase words** and **Check words with numbers**.
- **Check special regions** including headers, footers, frames, and tables when checking spelling.

Here you can also check which user-defined (custom) dictionaries are active by default, and add or remove dictionaries, by clicking the **New** or **Delete** buttons.

Note

OpenOffice does not have a grammar checker, but you can install a grammar checker extension such as LanguageTool and access that tool from **Tools > Spelling and Grammar**. See “Adding Functionality with Extensions” on page 36 for more information.

Choosing Internet Options

Use the Internet Options pages to define search engines and save proxy settings for use with OpenOffice.

If you are using a Unix- or Linux-based operating system (including macOS), an additional page of E-mail options is available, where you can specify the e-mail program to use when you send the current document as e-mail. Under Windows the operating system's default e-mail program is always used.

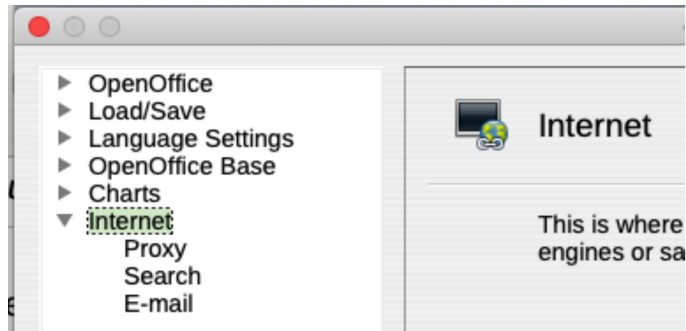


Figure 27: Internet options available to Linux and macOS users

Controlling AutoCorrect Functions

Some people find some or all of the items in the AutoCorrect function annoying because they change what you type when you do not want it changed. Many people find some AutoCorrect functions quite helpful; if you do, then select the relevant options. But if you find unexplained changes appearing in your document, this is a good place to look to find the cause.

To open the AutoCorrect dialog, click **Tools > AutoCorrect Options**. (You need to have a document open for this menu item to appear.)

In Writer, this dialog has five tabs, as shown in Figure 28. In other components of Apache OpenOffice, the dialog has only four tabs.

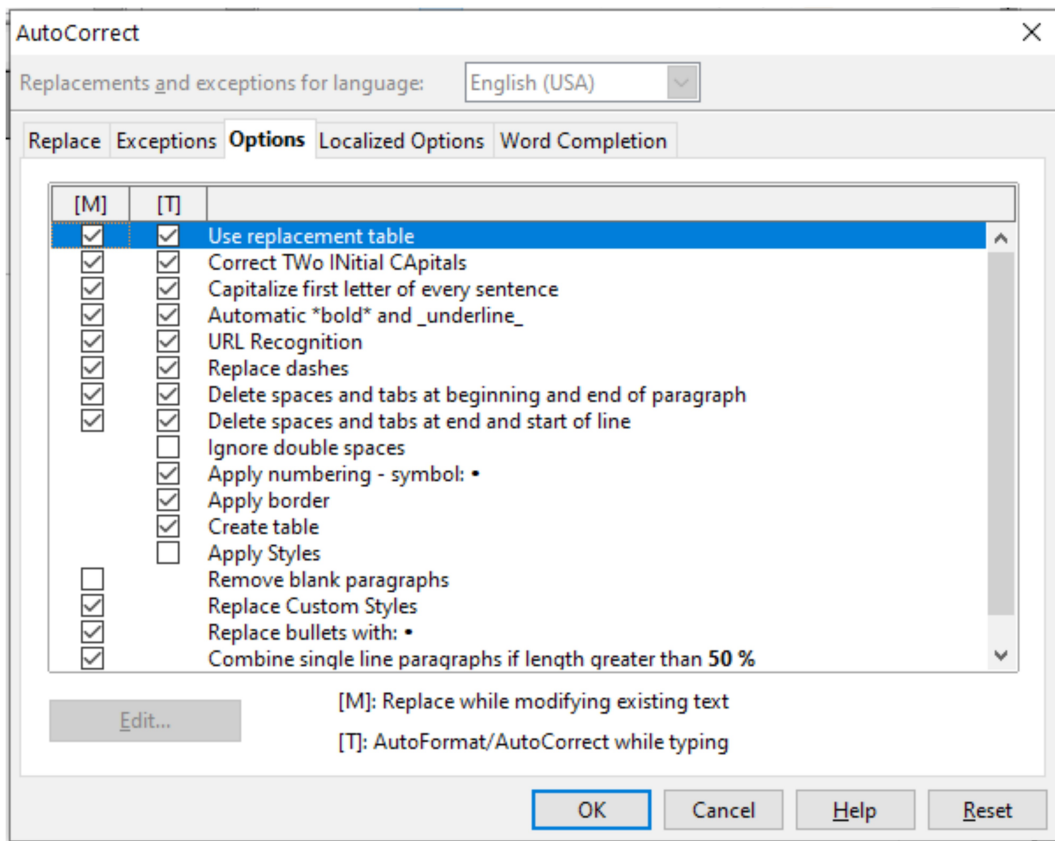


Figure 28: The AutoCorrect dialog in Writer, showing the five tabs and some of the choices

Customizing Apache OpenOffice

You can customize menus, toolbars, and keyboard shortcuts in OpenOffice, add new menus and toolbars, and assign macros to events. However, you cannot customize context (right-click) menus.

Other customizations are made easy by extensions that you can install from the OpenOffice website or from other providers.

Note

Customization to menus and toolbars can be saved in a template. To do so, first save them in a document and then save the document as a template as described in Chapter 2 (Styles and Templates).

Customizing Menus

You can add and rearrange items on the menu bar, add items to menus, and make other changes.

To customize menus:

- 1) Choose **Tools > Customize**.
- 2) On the **Customize** dialog, go to the **Menus** page.
- 3) In the Save In drop-down list, choose whether to save this changed menu for the application (for example, OpenOffice Writer) or for a selected document (for example, MyDoc.odt).

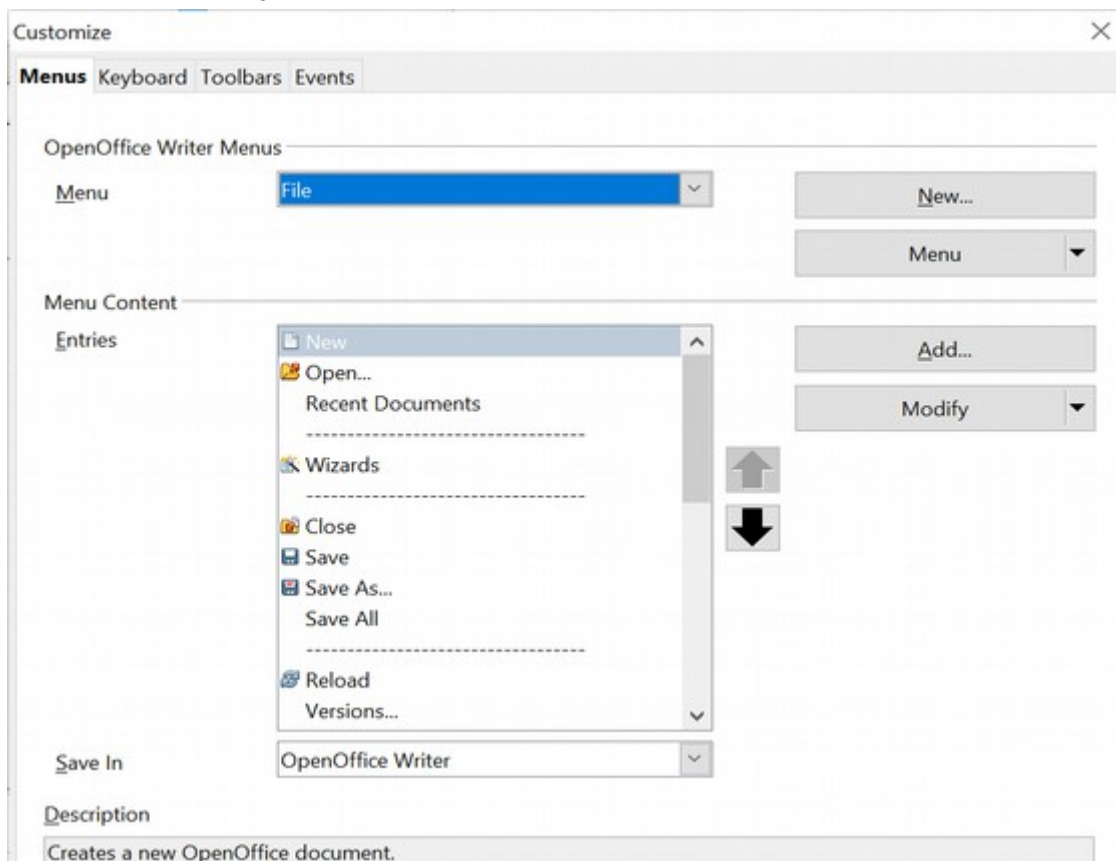


Figure 29: The Menus page of the Customize dialog

- 4) In the section **OpenOffice [name of the program (example: Writer)] Menu**, select from the **Menu** drop-down list the menu that you want to customize. The list includes all the main menus as well as submenus (menus that are contained under another menu). For example, in addition to *File*, *Edit*, *View*, and so on, there is *File | Send* and *File | Templates*. The commands available for the selected menu are shown in the central part of the dialog.
- 5) To customize the selected menu, click on the **Menu** or **Modify** buttons. You can also add commands to a menu by clicking on the **Add** button. These actions are described in the following sections. Use the up and down arrows next to the Entries list to move the selected menu item to a different position.
- 6) When you have finished making all your changes, click **OK** (not shown in illustration) to save them.

Creating a New Menu

In the Customize dialog, click **New** to display the dialog shown in Figure 30.

- 1) Type a name for your new menu in the **Menu name** box.
- 2) Use the up and down arrow buttons to move the new menu into the required position on the menu bar.
- 3) Click **OK** to save.

The new menu now appears on the list of menus in the Customize dialog. (It will appear on the menu bar itself after you save your customizations.)

After creating a new menu, you need to add some commands to it, as described in “Adding a Command to a Menu” on page 30.

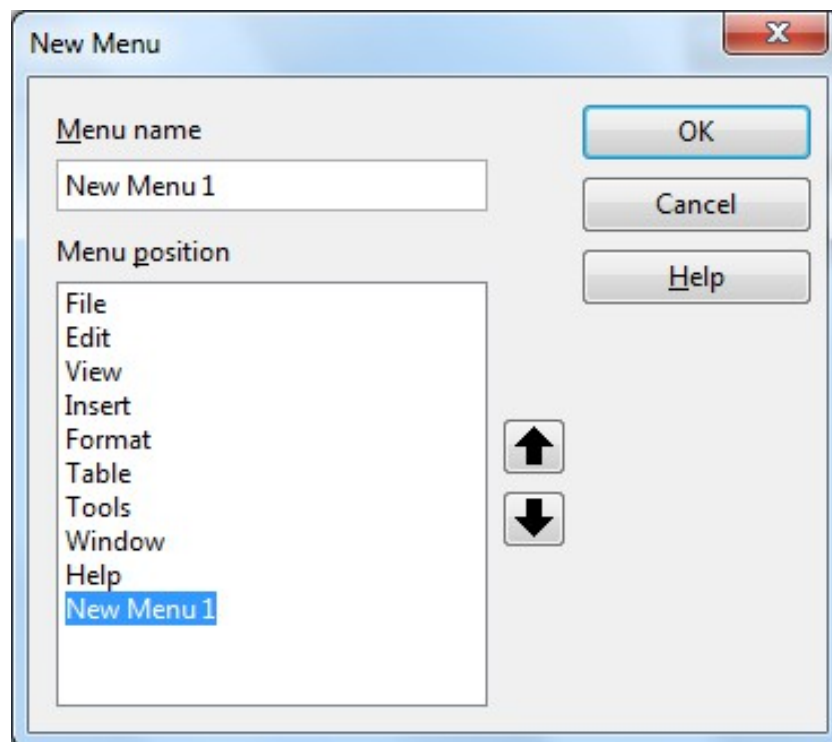


Figure 30: Adding a new menu

Modifying Existing Menus

To modify an existing menu, select it in the Menu list and click the **Menu** button to drop a list of modifications: **Move**, **Rename**, **Delete**. Not all of these modifications

can be applied to all the entries in the Menu list. For example, **Rename** and **Delete** are not available for the menus supplied by AOO.

To move a menu (such as *File*), choose **Menu > Move**. A dialog similar to the one shown in Figure 30 (but without the **Menu name** box) opens. Use the up and down arrow buttons to move the menu into the required position.

To move submenus (such as *File | Send*), select the main menu (File) in the Menu list and then, in the Menu Content section of the dialog, select the submenu (Send) in the Entries list and use the arrow keys to move it up or down in the sequence.

In addition to renaming, you can specify a keyboard shortcut that allows you to select a menu command when you press *Alt+* an underlined letter in a menu command.

- 1) Select a menu entry.
- 2) Click the **Modify** button and select **Rename**.
- 3) Add a tilde (~) in front of the letter that you want to use as an accelerator. For example, to select the Save All command by pressing *Alt+V* (after opening the File menu using *Alt+F*), enter `Save~ve All`.

Caution



Be careful when using these shortcuts. In the example above, if the File menu is not already open, then pressing *Alt+V* opens the View menu; if some other menu is open, *Alt+V* might activate some other command.

Adding a Command to a Menu

You can add commands to the supplied menus and to menus you have created. On the Customize dialog, select the menu in the Menu list and click the **Add** button in the Menu Content section of the dialog.

On the Add Commands dialog (Figure 31), select a category and then the command, and click **Add**. The dialog remains open, so you can select several commands. When you have finished adding commands, click **Close**. Back on the Customize dialog, you can use the up and down arrow buttons to arrange the commands in your preferred sequence.

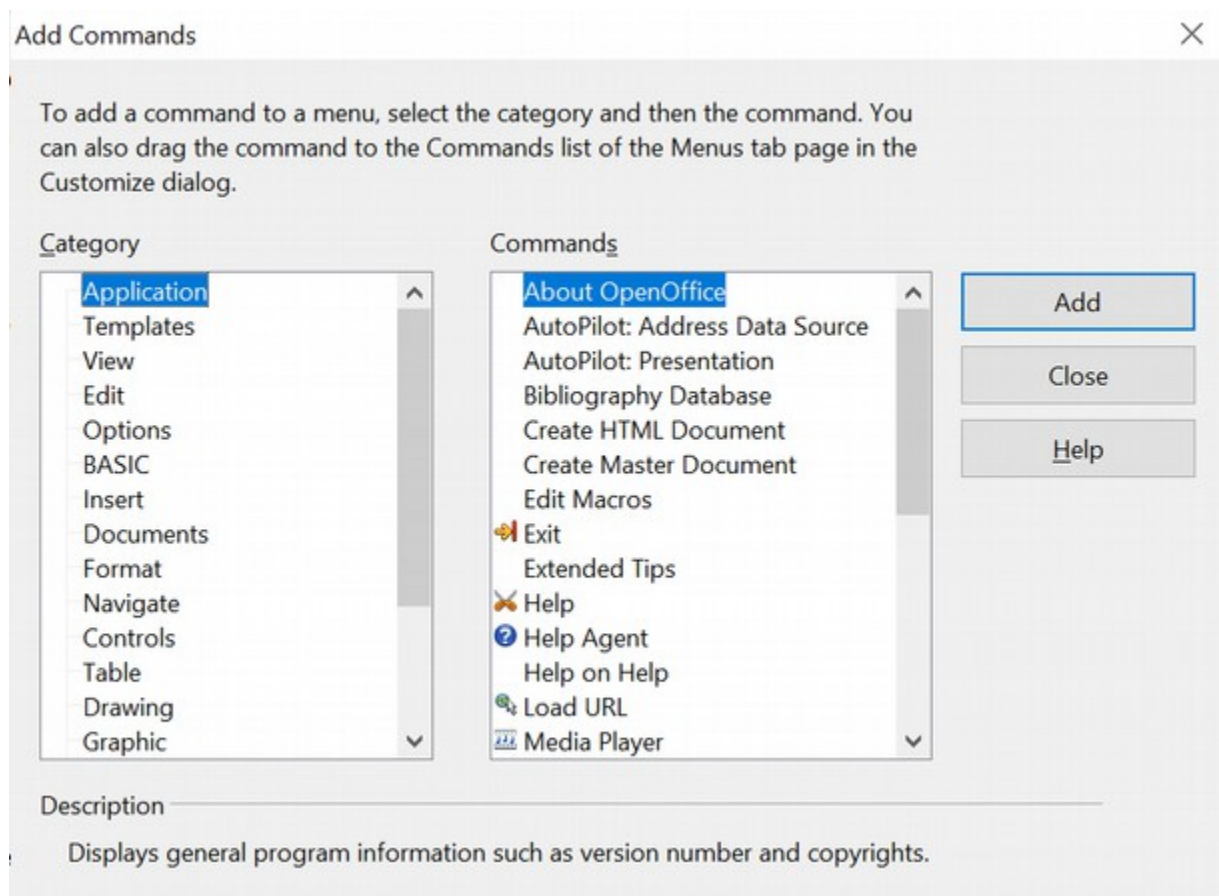


Figure 31: Adding a command to a menu

Modifying Menu Entries

In addition to changing the sequence of entries on a menu or submenu, you can add submenus, rename or delete the entries, and add group separators.

To begin, select the menu or submenu in the Menu list near the top of the Customize page, then select the entry in the Entries list under Menu Content. Click the **Modify** button and choose the required action from the drop-down list of actions.

Most of the actions should be self-explanatory. **Begin a group** adds a separator line after the highlighted entry.

Customizing Toolbars

You can customize toolbars in several ways, including choosing which icons are visible and locking the position of a docked toolbar, as described in Chapter 1 (Introducing Apache OpenOffice). This section describes how to create new toolbars and add other icons (commands) to the list of those available on a toolbar.

To get to the toolbar customization dialog, do any of the following:

- On the toolbar, click the arrow at the end of the toolbar and choose **Customize Toolbar**.
- Choose **View > Toolbars > Customize** from the menu bar.
- Choose **Tools > Customize** from the menu bar and pick the **Toolbars** page (Figure 32).

To customize toolbars:

- 1) In the Save In drop-down list, choose whether to save this changed toolbar for the application (for example, Writer) or for a selected document.
- 2) In the section **OpenOffice <name of the program (example: Writer)> Toolbars**, select from the **Toolbar** drop-down list the toolbar that you want to customize.
- 3) You can create a new toolbar by clicking on the **New** button, or customize existing toolbars by clicking on the **Toolbar** or **Modify** buttons, and add commands to a toolbar by clicking on the **Add** button. These actions are described below.
- 4) When you have finished making all your changes, click **OK** to save them.

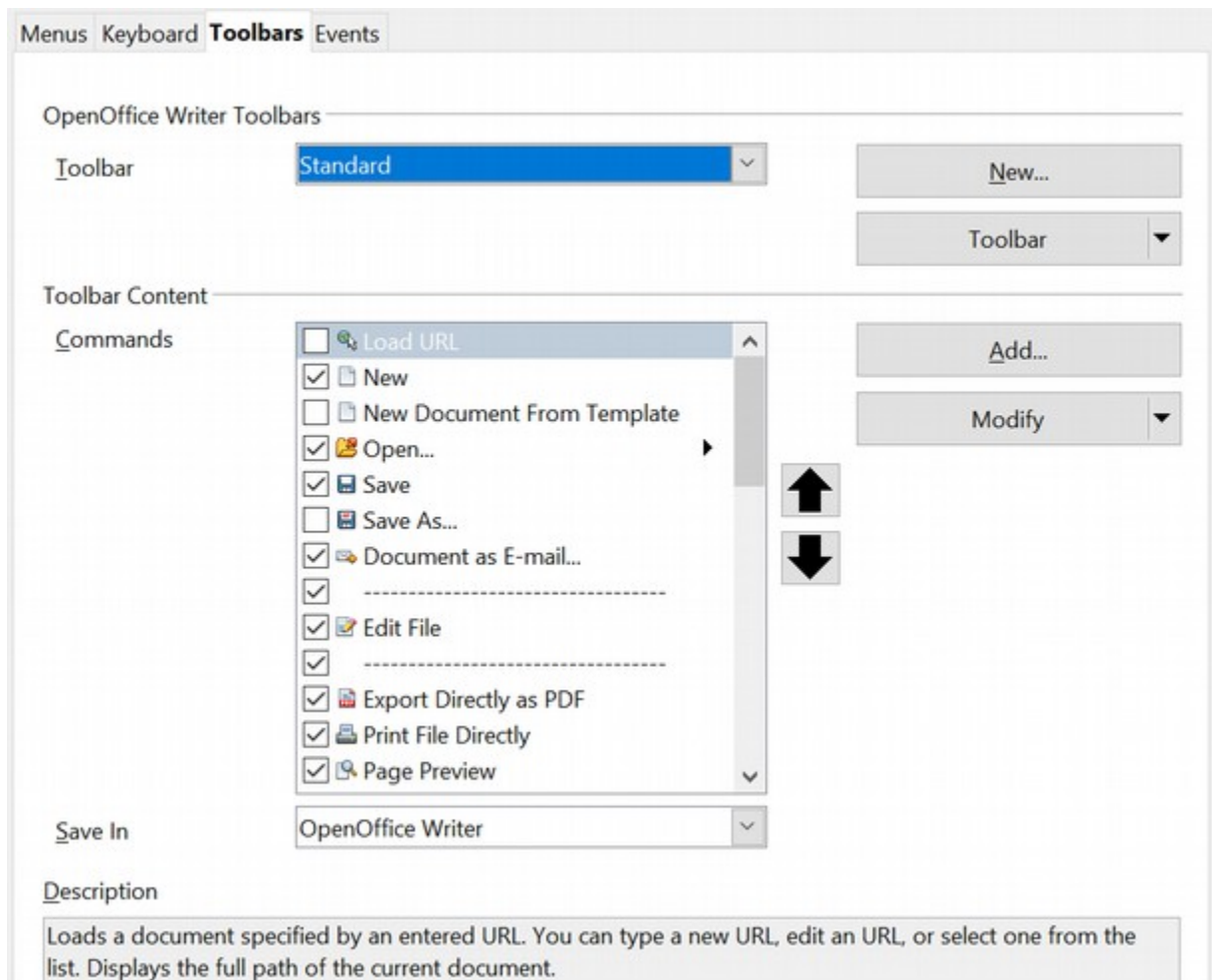


Figure 32. The Toolbars page of the Customize dialog

Creating a New Toolbar

To create a new toolbar:

- 1) Choose **Tools > Customize > Toolbars** from the menu bar.
- 2) Click **New**. on the Name dialog, type the new toolbar's name and choose from the Save In drop-down list where to save this changed menu: for the application (for example, Writer) or for a selected document.

The new toolbar now appears on the list of toolbars in the Customize dialog. After creating a new toolbar, you need to add some commands to it, as described below.

Adding a Command to a Toolbar

If the list of available buttons for a toolbar does not include all the commands you want on that toolbar, you can add commands. When you create a new toolbar, you need to add commands to it.

- 1) On the Toolbars page of the Customize dialog, select the toolbar in the Toolbar list and click the **Add** button in the Toolbar Content section of the dialog.
- 2) The Add Commands dialog is the same as for adding commands to menus (Figure 31). Select a category and then the command, and click **Add**. The dialog remains open, so you can select several commands. When you have finished adding commands, click **Close**. If you insert an item which does not have an associated icon, the toolbar will display the full name of the item: the next section describes how to choose an icon for a toolbar command.
- 3) Back on the Customize dialog, you can use the up and down arrow buttons to arrange the commands in your preferred sequence.
- 4) When you are done making changes, click **OK** to save.

Choosing Icons for Toolbar Commands

Toolbar buttons usually have icons, not words, on them, but not all the commands have associated icons.

To choose an icon for a command, select the command and click **Modify > Change icon**. On the Change Icon dialog, you can scroll through the available icons, select one, and click **OK** to assign it to the command.

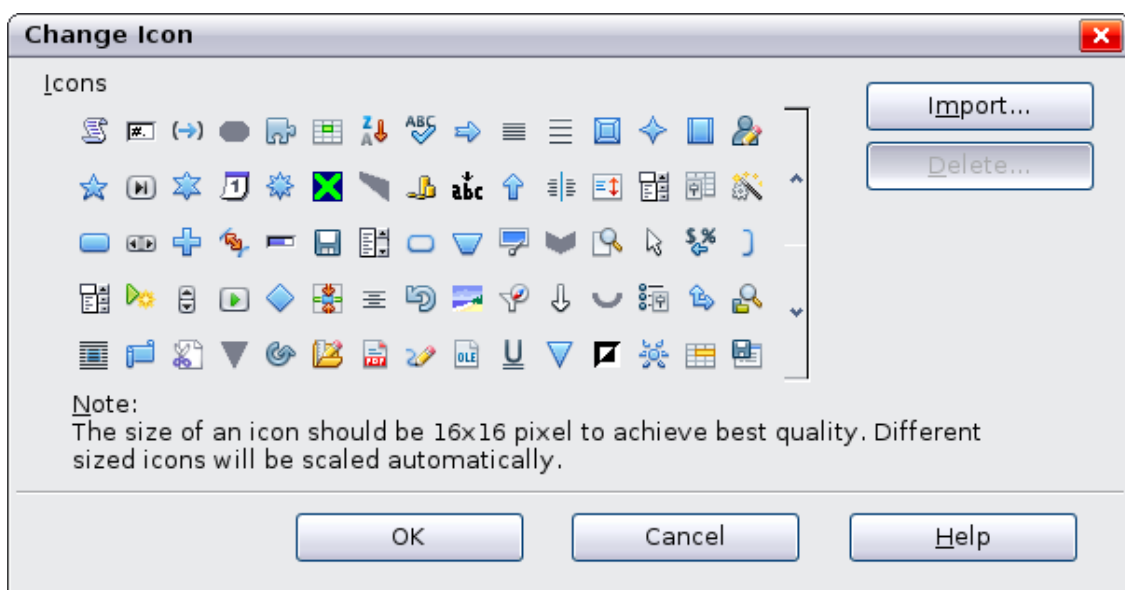


Figure 33: Change Icon dialog

To use a custom icon, create it in a graphics program and import it into AOO by clicking the **Import** button on the Change Icon dialog. Custom icons must be 16 x 16 or 26 x 26 pixels in size and in the PNG file format.

Assigning Shortcut Keys

In addition to using the built-in keyboard shortcuts (listed in the included Help), you can define your own. You can assign shortcuts to standard AOO functions or your own macros and save them for use with the entire Apache OpenOffice suite.

Caution



Be careful when reassigning your operating system's or AOO's predefined shortcut keys. Many key assignments are universally understood shortcuts, such as *F1* for Help, and are always expected to provide certain results. Although you can easily reset the shortcut key assignments to the AOO defaults, changing some common shortcut keys can cause confusion, frustration, and possible data loss or corruption, especially if other users share your computer.

To adapt shortcut keys to your needs, use the Customize dialog, as described below.

- 1) Select **Tools > Customize > Keyboard**. The Customize dialog opens.
 - 2) To have the shortcut key assignment available in all components of OpenOffice select the **OpenOffice** button.
 - 3) Next select the required function from the *Category* and *Function* lists.
 - 4) Now select the desired shortcut keys in the *Shortcut keys* list and click the **Modify** button at the upper right.
 - 5) Click **OK** to accept the change. Now the chosen shortcut keys will execute the function chosen in step 3 above whenever they are pressed.
-

Note

All existing shortcut keys for the currently selected *Function* are listed in the *Keys* selection box. If the *Keys* list is empty, it indicates that the chosen key combination is free for use. If it were not, and you wanted to reassign a shortcut key combination that is already in use, you must first delete the existing key.

Shortcut keys that are greyed out in the listing on the Customize dialog, such as F1 and F10, are not available for reassignment.

Example: Assigning Styles to Shortcut Keys

You can configure shortcut keys to quickly assign styles in your document. Some shortcuts are predefined, such as *Ctrl+0* for the *Text body* paragraph style, *Ctrl+1* for the *Heading 1* style, and *Ctrl+2* for *Heading 2*. You can modify these shortcuts and create your own.

- 1) Click **Tools > Customize > Keyboard**. The Keyboard page of the Customize dialog (Figure 34) opens.

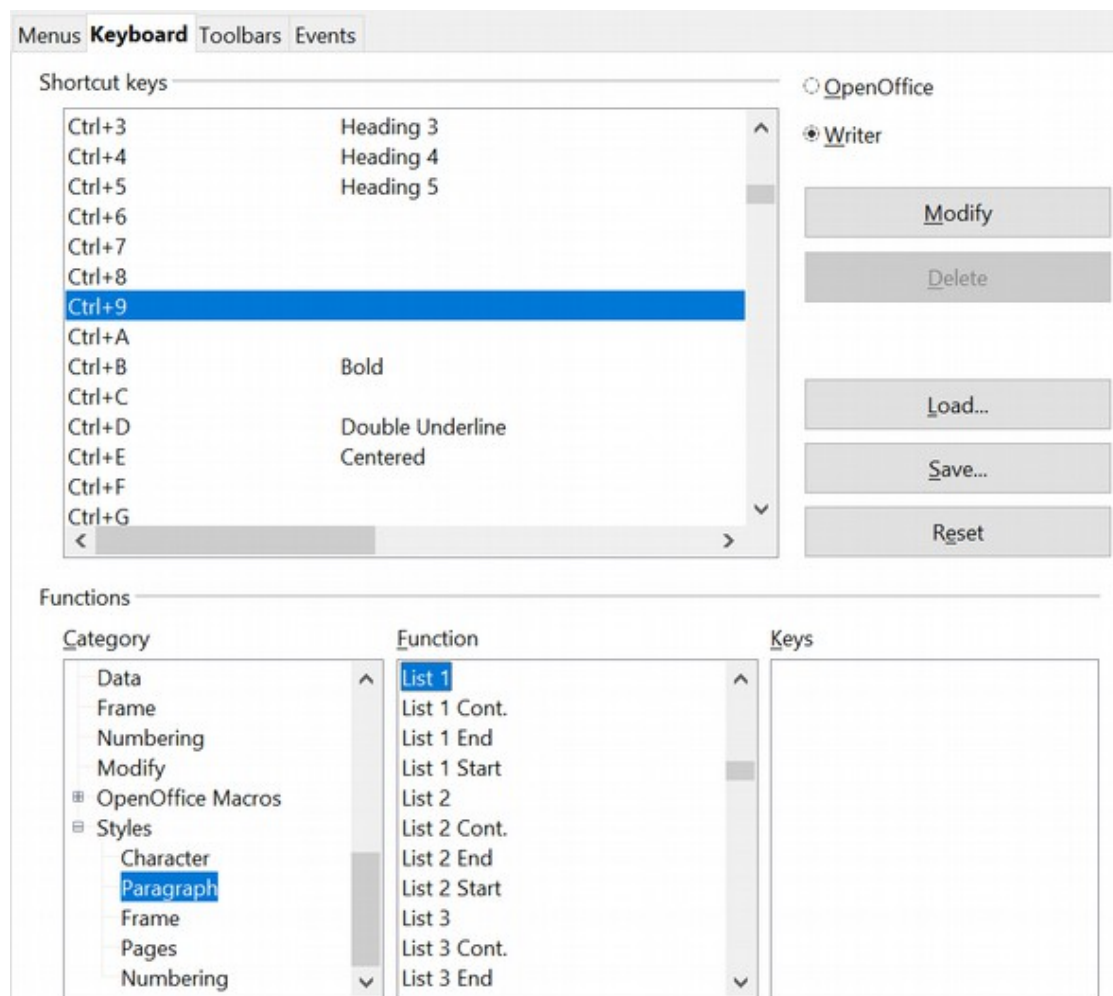


Figure 34. Defining keyboard shortcuts for applying styles

- 2) To have the shortcut key assignment available only with one component (for example, Writer), select that component's name in the upper right corner of the page; otherwise select **OpenOffice** button to make it available to every component.
- 3) Choose the shortcut keys you want to assign a style to. In this example, we have selected *Ctrl+9*.
- 4) In the *Functions* section at the bottom of the dialog, scroll down in the *Category* list to *Styles*. Click the expansion symbol (usually a + sign or triangle) to expand the list of styles.
- 5) Choose the category of style. (This example uses a paragraph style, but you can also choose character styles and others.) The *Function* list will display the names of the available styles for the selected category. The example shows some of AOO's predefined styles.
- 6) To assign *Ctrl+9* to be the shortcut key combination for the List 1 style, select *List 1* in the *Function* list, and then click **Modify**. *Ctrl+9* now appears in the *Keys* list on the right, and *List 1* appears next to *Ctrl+9* in the Shortcut keys box at the top.
- 7) Make any other required changes, and then click **OK** to save these settings and close the dialog.

Saving Changes to a File

Changes to the shortcut key assignments can be saved in a keyboard configuration file for use at a later time, thus permitting you to create and apply different configurations as the need arises. To save keyboard shortcuts to a file:

- 1) After making your keyboard shortcut assignments, click the **Save** button at the right of the Customize dialog (Figure 34).
- 2) In the Save Keyboard Configuration dialog, select *All files* from the **Save as Type** list.
- 3) Next enter a name for the keyboard configuration file in the **File name** box, or select an existing file from the list. If you need to, browse to find a file from another location.
- 4) Click **Save**. A confirmation dialog appears if you are about to overwrite an existing file, otherwise the file will be saved immediately.

Loading a Saved Keyboard Configuration

To load a saved keyboard configuration file and replace your existing configuration, click the **Load** button at the right of the Customize dialog, and then select the configuration file from the Load Keyboard Configuration dialog.

Resetting the Shortcut Keys

To reset all the keyboard shortcuts to their default values, click the **Reset** button near the bottom right of the Customize dialog. Use this feature with care as no confirmation dialog will be displayed; the defaults will be set without any further notice or user input.

Adding Functionality with Extensions

An extension is a package that can be installed into OpenOffice to add new functionality.

Although individual extensions can be found in different places, the official extension repository is at <https://extensions.openoffice.org/>. Some extensions are free of charge; others are available for a fee. Check the descriptions to see what licenses and fees apply to the ones that interest you.

Installing Extensions

To install an extension, follow these steps:

- 1) Download an extension and save it anywhere on your computer.
- 2) In AOO, select **Tools > Extension Manager** from the menu bar. In the Extension Manager dialog (Figure 35), click **Add**. (Your Extension Manager dialog may show no installed extensions or a different set of extensions.)
- 3) A file browser window opens. Find and select the extension you downloaded and click **Open**. The extension begins installing. You may be asked to accept a license agreement.
- 4) When the installation is complete, the extension is listed in the Extension Manager dialog.

Tip

To get extensions that are listed in the repository, you can open the Extension Manager and click the **Get more extensions online** link.

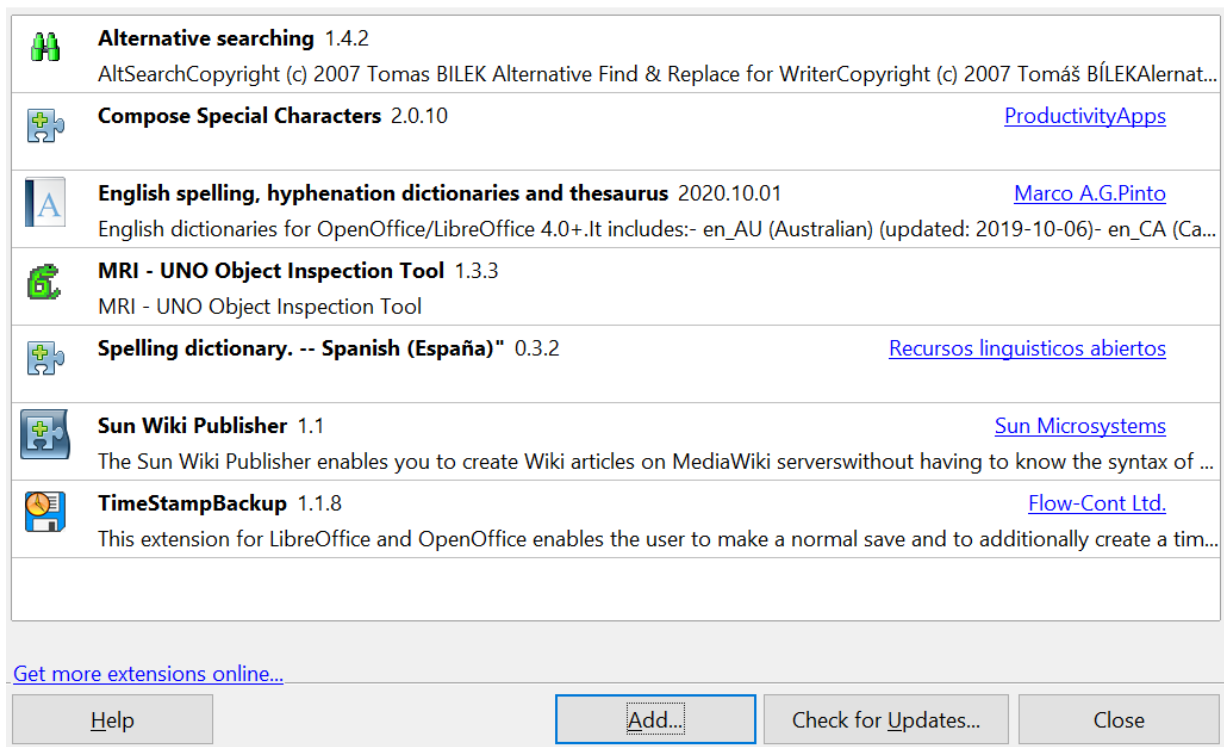


Figure 35: Using the Extension Manager

Note To install a shared extension, you need write access to the Apache OpenOffice installation directory.
