



Calc Guide

Chapter 6

Printing, Exporting, and E-mailing

This PDF is designed to be read onscreen, two pages at a time. If you want to print a copy, your PDF viewer should have an option for printing two pages on one sheet of paper, but you may need to start with page 2 to get it to print facing pages correctly. (Print this cover page separately.)

Copyright

This document is Copyright © 2005–2010 by its contributors as listed in the section titled **Authors**. You may distribute it and/or modify it under the terms of either the [GNU General Public License](#), version 3 or later, or the [Creative Commons Attribution License](#), version 3.0 or later.

All trademarks within this guide belong to their legitimate owners.

Authors

Jean Hollis Weber
Emma Kirsopp
Peter Kupfer
Shelagh Manton
Linda Worthington

Feedback

Please direct any comments or suggestions about this document to:
authors@user-faq.openoffice.org

Acknowledgements

Portions of this chapter are taken from articles written by Bruce Byfield and first published on the *Linux Journal* website; used with permission

Publication date and software version

Published 7 February 2010. Based on OpenOffice.org 3.2.



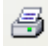
You can download
an editable version of this document from
<http://oooauthors.org/english/userguide3/published/>

Contents

Copyright.....	2
Quick printing.....	5
Controlling printing.....	5
Printer options.....	6
Selecting sheets to print.....	6
Selecting the page order, details, and scale.....	7
Using print ranges.....	9
Defining a print range.....	9
Adding to the print range.....	9
Removing a print range.....	9
Editing a print range.....	10
Printing rows or columns on every page.....	11
Defining a custom print range.....	11
Page breaks.....	13
Inserting a page break.....	13
Row break.....	13
Column break.....	13
Deleting a page break.....	13
Headers and footers.....	14
Setting a header or a footer.....	14
Header or footer appearance.....	15
Setting the contents of the header or footer.....	16
Exporting to PDF.....	17
Quick export to PDF.....	17
Controlling PDF content and quality.....	17
General page of PDF Options dialog.....	17
Initial View page of PDF Options dialog.....	19
User Interface page of PDF Options dialog.....	19
Links page of PDF Options dialog.....	21
Security page of PDF Options dialog.....	22
Exporting to XHTML.....	23

Saving as Web pages (HTML).....24
E-mailing spreadsheets.....24
 E-mailing a spreadsheet to several recipients.....24
Digital signing of documents.....25
Removing personal data.....26

Quick printing

Click the **Print File Directly** icon  to send the entire document to the default printer defined for your computer.

Note You can change the action of the **Print File Directly** icon to send the document to the printer defined for the document instead of the default printer for the computer. Choose **Tools > Options > Load/Save > General** and the **Load printer settings with the document** option.

Controlling printing

For more control over printing, use **File > Print**.

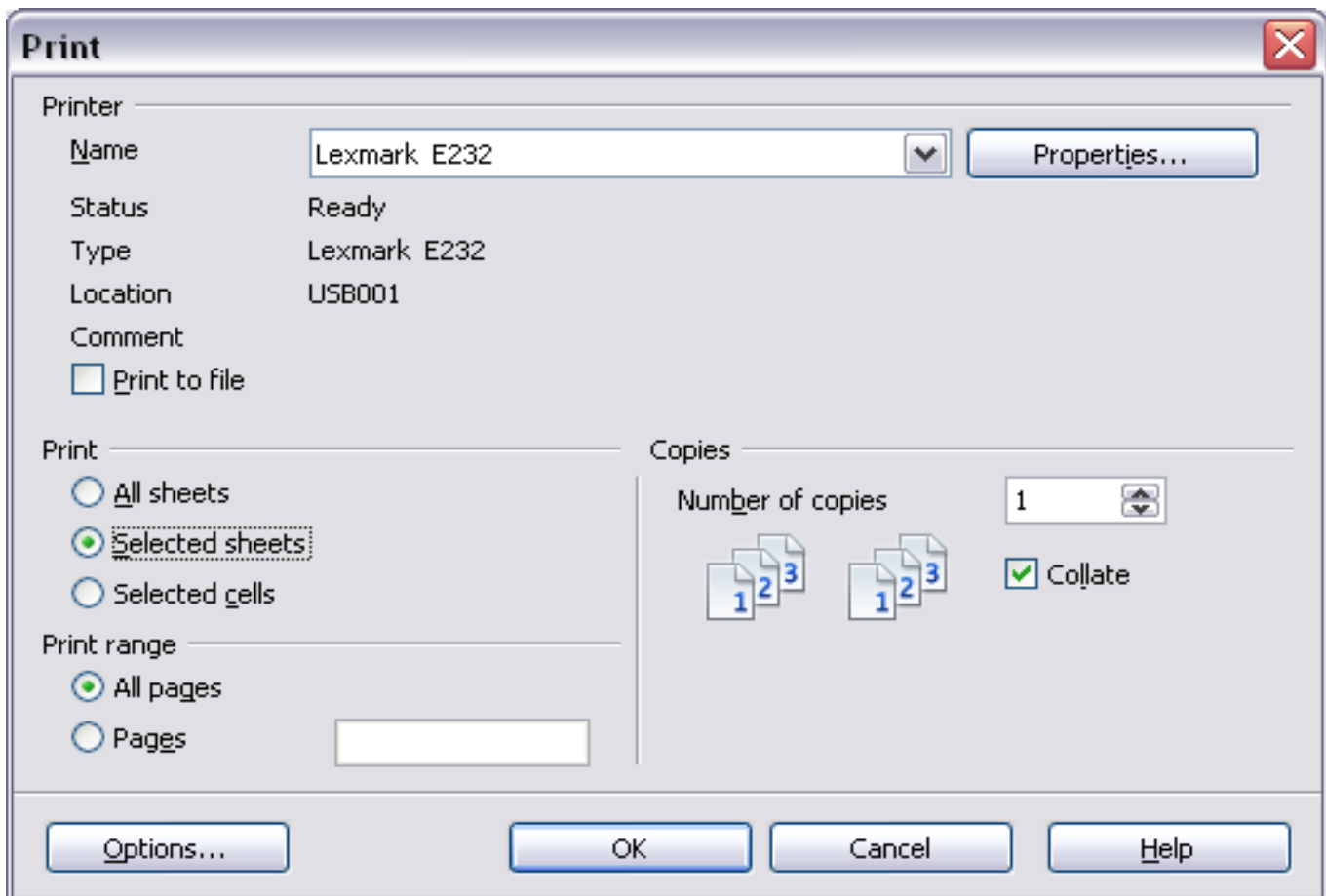


Figure 1. The Print dialog

On the Print dialog, you can choose:

- Which printer to use (if more than one are installed on your system) and the properties of the printer—for example, page orientation (portrait or landscape), which paper tray to use, and

what paper size to print on. The properties available depend on the selected printer; consult the printer's documentation for details.

- What sheets and pages to print, how many copies to print, and in what order to print them. Use dashes to specify page ranges and commas or semicolons to separate ranges; for example: 1, 5, 11–14, 34–40. *Selection* refers to the highlighted part of a page or pages.

Printer options

You can set printer options for the current document only or for all spreadsheets.

- To select options for the current document, click the **Options** button on the bottom left of the Print dialog (Figure 1).
- To set print options permanently, go to **Tools > Options > OpenOffice.org Calc > Print**. The dialogs for both are very similar.



Figure 2. Printer Options dialog

Selecting sheets to print

You can select one or more sheets for printing. This can be useful if you have a large spreadsheet with multiple sheets and only want to print certain sheets. For example, an accountant might record costs over time with one sheet for each month. To print the November and December sheets, follow this procedure.

- 1) Go to the November sheet. Hold down the *Control* key and click on the tab of the December sheet.
- 2) If you wish to print all of the sheets, choose **File > Print** and click the **Options** button.
- 3) Deselect **Print only selected sheets**. This affects the print preview, export, and printing of your spreadsheet. Click **OK**.

Note

The *Options* button is different from the *Properties* button. *Properties* deals with the settings of the printer, whereas *Options* deals with Oo's settings.

Caution

If you keep the selected sheets selected, when you enter data on one sheet, you enter data on all sheets at the same time. This might not be what you want.

Selecting the page order, details, and scale

To select the page order, details, and scale to be printed:

- 1) Choose **Format > Page** from the main menu. The Page Style dialog opens; any changes made here are saved in the page style for this spreadsheet.
- 2) Choose the **Sheet** tab (Figure 3).
- 3) After making your selections (see next page), click **OK**.

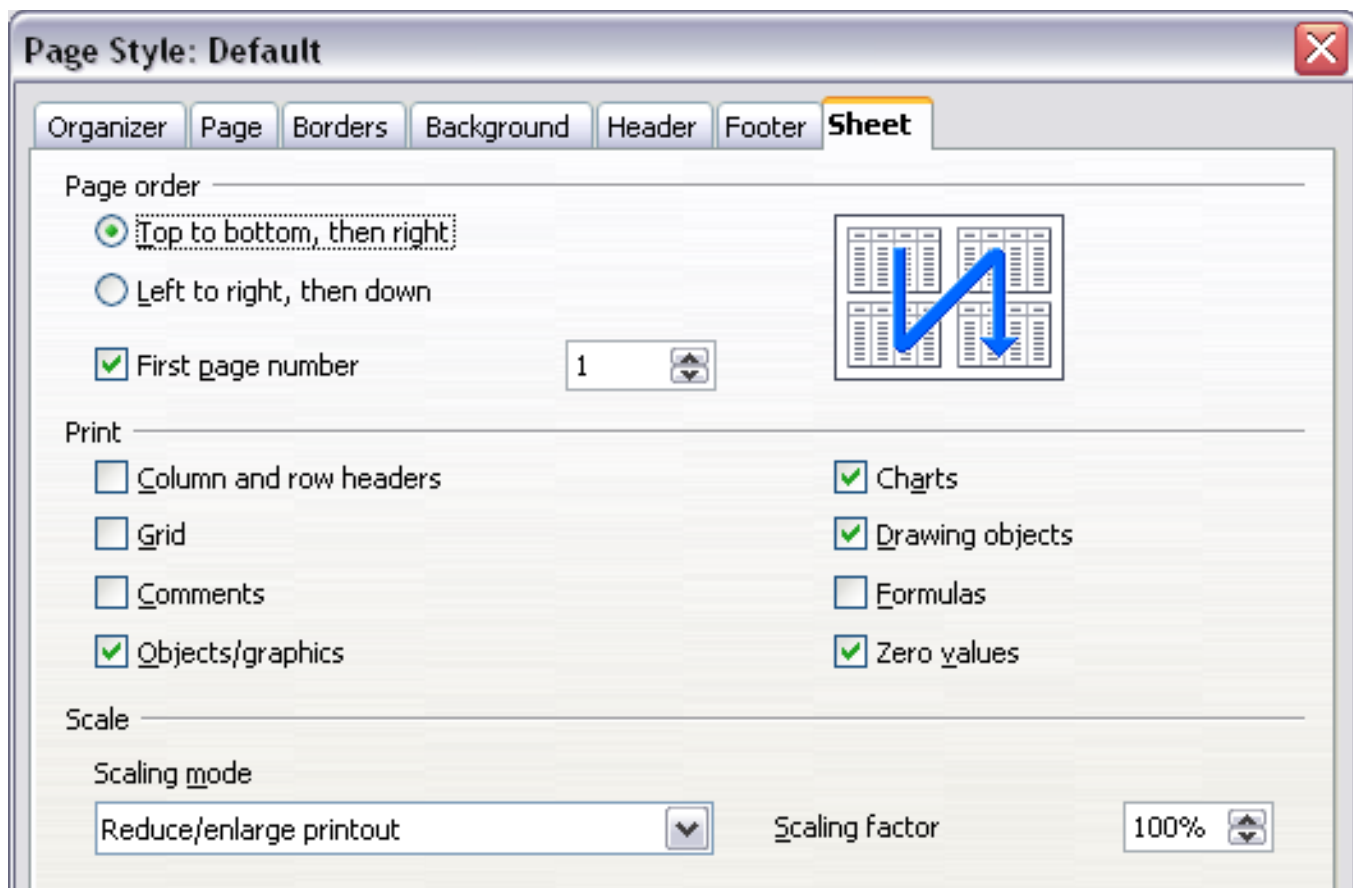


Figure 3. The *Sheet* tab of the *Page Style* dialog

Page Order

You can set the order in which pages print. This is especially useful in a large document; for example, controlling the print order can save time if you have to collate the document a certain way.

Where a sheet prints to more than one page of paper, it can be printed either by column, where the first column of pages prints, and then the second column and so on, or by row as shown in the graphic on the top right of the dialog in Figure 3.

Print

You can specify which details to print. Those details include:

- Row and column headers
- Sheet grid—prints the borders of the cells as a grid
- Comments—prints the comments defined in your spreadsheet on a separate page, along with the corresponding cell reference
- Objects and graphics
- Charts
- Drawing objects
- Formulas—prints the formulas contained in the cells, instead of the results
- Zero Values—prints cells with a zero value

Note

Remember that since the print detail options are a part of the page's properties, they are also a part of the page style's properties. Therefore, different page styles can be set up to quickly change the print properties of the sheets in the spreadsheet.

Scale

Use the scale features to control the number of pages the data will print on. This can be useful if a large amount of data needs to be printed more compactly or, if the reader has poor eyesight, text can be enlarged when it prints.

- Reduce/Enlarge printout—scales the data in the printout either larger or smaller. For example if a sheet would normally print out as four pages (two high and two wide), a scaling of 50% would print as one page (both width and height are halved).
- Fit print range(s) on number of pages—defines exactly how many pages the printout will take up. This option will only reduce a printout, it will not enlarge it. To enlarge a printout, the reduce/enlarge option must be used.

- Fit print range(s) to width/height—defines how high and wide the printout will be, in pages.

Using print ranges

Print ranges have several uses, including printing only a specific part of the data or printing selected rows or columns on every page.

Defining a print range

To define a new print range or modify an existing print range:

- 1) Highlight the range of cells that comprise the print range.
- 2) Choose **Format > Print Ranges > Define**.

The page break lines display on the screen.

Tip You can check the print range by using **File > Page Preview**. OOo will only display the cells in the print range.

Adding to the print range

After defining a print range, you can add more cells to it. This allows multiple, separate areas of the same sheet to be printed, while not printing the whole sheet. After you have defined a print range:

- 1) Highlight the range of cells to be added to the print range.
- 2) Choose **Format > Print Ranges > Add**. This adds the extra cells to the print range.

The page break lines no longer display on the screen.

Note The additional print range will print as a separate page, even if both ranges are on the same sheet.

Removing a print range

It may become necessary to remove a defined print range, for example if the whole sheet needs to be printed later.

Choose **Format > Print Ranges > Remove**. This removes *all* defined print ranges on the sheet. After the print range is removed, the default page break lines will appear on the screen.

Editing a print range

At any time, you can directly edit the print range, for example to remove or resize part of the print range. Choose **Format > Print Ranges > Edit**. If you have already selected a print range, the Edit Print Ranges dialog looks something like Figure 4.

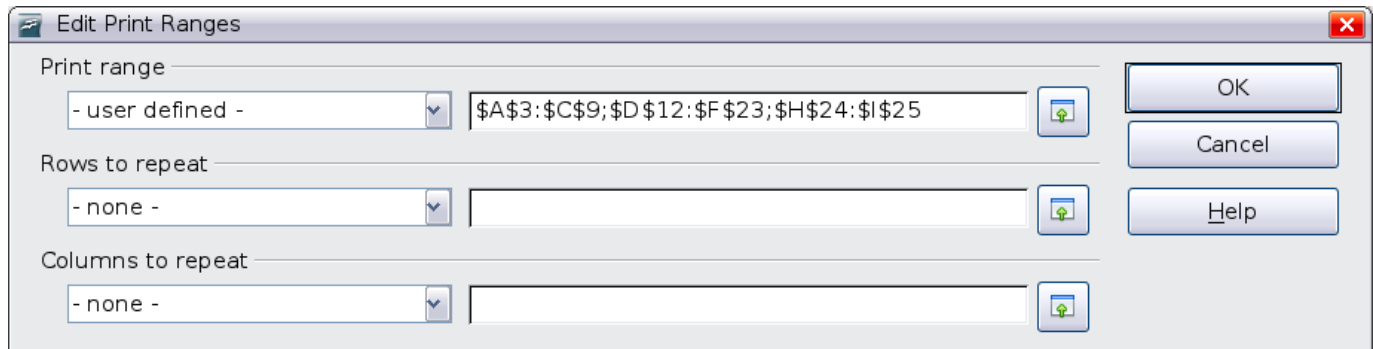


Figure 4: Edit a print range

In this example, three rectangles are selected, each separated by a semicolon. The first is bounded by cell A3 (\$A\$3) in the top left and cell C9 (\$C\$9) in the bottom right corners. Clicking anywhere in the text entry box shows the currently selected print range on the screen, with each rectangle in a different color, as in Figure 5.

After making any changes, click the **Shrink** icon next to the text entry box to redisplay the rectangles with their new values.



To re-expand the Edit Print Ranges dialog, click the **Shrink** icon again.

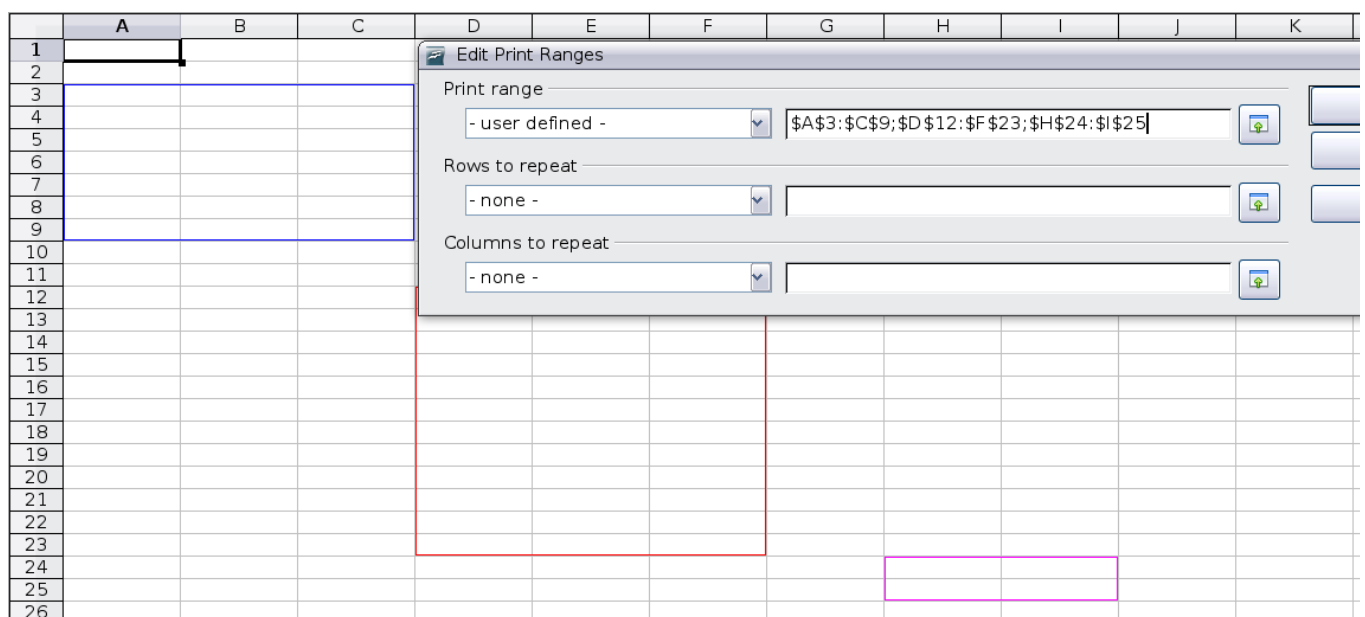


Figure 5: Print range marked by colored boxes

Printing rows or columns on every page

If a sheet is printed on multiple pages, you can set up certain rows or columns to repeat on each printed page.

For example, if the top two rows of the sheet as well as column A need to be printed on all pages, do the following:

- 1) Choose **Format > Print Ranges > Edit**. On the Edit Print Ranges dialog, type the rows in the text entry box under *Rows to repeat*. For example, to repeat rows 1 and 2, type **\$1:\$2**. In the *Rows to repeat* list, - **none** - changes to - **user defined** -.

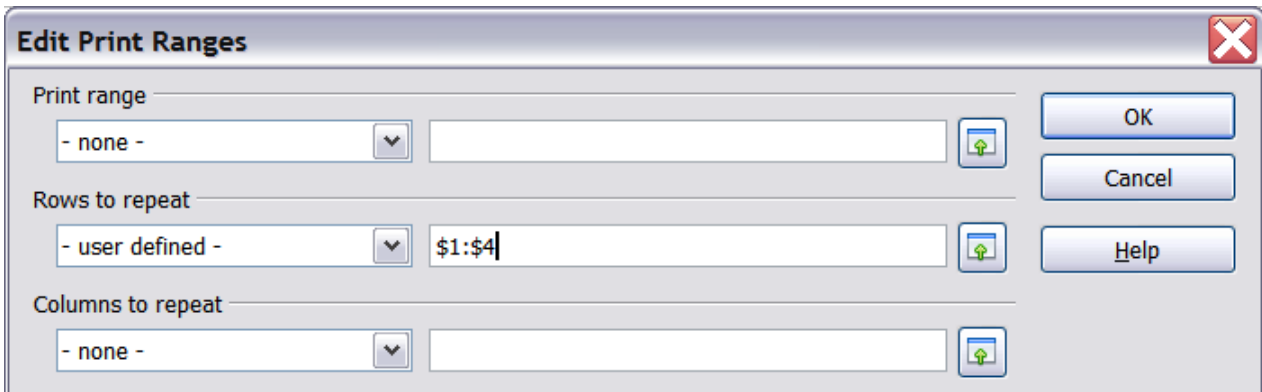


Figure 6: Specifying repeating rows

- 2) To repeat columns, type the columns in the text entry box under *Columns to repeat*. For example, to repeat column A, type **\$A**. In the *Columns to repeat* list, - **none** - changes to - **user defined** -.
- 3) Click **OK**.

Note

You do not need to select the entire range of the rows to be repeated; simply select one cell in each row.

Defining a custom print range

In addition to highlighting a print range for each print job, you can define a range of cells to be used repeatedly. This may be useful if there are different areas of a large spreadsheet that need to be printed for different reports. Several different print ranges can be defined to meet this need.

- 1) To define a print range, use the same procedure as labeling an area of the sheet. Highlight the cells you want to define as a print range and select **Insert > Names > Define**. (The cells can be highlighted after opening the Define Names dialog as well.)

- 2) On the Define Names dialog (Figure 7), type a name for the range in the text box with the blinking cursor. **The name of the range cannot contain any spaces.**
- 3) Click the **More** button in the dialog and then select the **Print range** option. Click the **Add** button.
- 4) To include more than one group of cells in the selection, type in the additional ranges. For example, to select the rectangle with A3 as the top left cell and F20 as the bottom right cell, enter ; **\$A\$3:\$F\$20** or ;**A3:F20** (both work and are equivalent) after the initial selection. Make sure that each group of cells is separated with a semicolon.
- 5) Click **OK**.

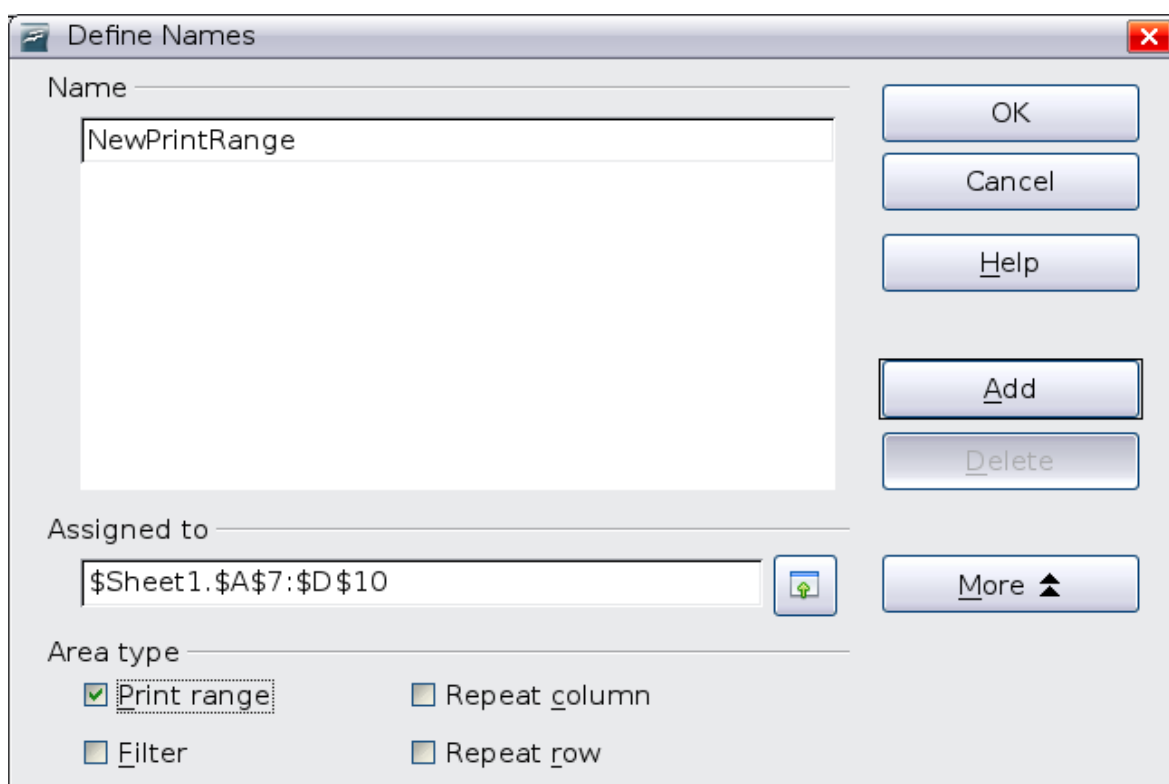


Figure 7: Define Names dialog

To print this range:

- 1) Choose **Format > Print Ranges > Edit** (Figure 4). The previously defined area now appears in the drop-down box under Print range.
- 2) Select the defined print range and click **OK**.

This method can be useful to quickly change the print range without highlighting a large area of cells every time.

Note

If the cell range name refers to more than one group of cells, it will not appear in the drop-down list.

Page breaks

While defining a print range can be a powerful tool, it may sometimes be necessary to manually adjust Calc's printout. To do this, you can use a *manual break*. A manual break helps to ensure that your data prints properly. You can insert a horizontal page break above, or a vertical page break to the left of, the active cell.

Inserting a page break

To insert a page break:

- 1) Navigate to the cell where the page break will begin.
- 2) Select **Insert > Manual Break**.
- 3) Select **Row Break** or **Column Break** depending on your need.

The break is now set.

Row break

Selecting *Row Break* creates a page break above the selected cell. For example, if the active cell is H15, then the break is created between rows 14 and 15.

Column break

Selecting *Column Break* creates a page break to the left of the selected cell. For example, if the active cell is H15, then the break is created between columns G and H.

Tip

To see page break lines more easily on screen, you can change their color. Choose **Tools > Options > OpenOffice.org > Appearance** and scroll down to the Spreadsheet section.

Deleting a page break

To remove a page break:

- 1) Navigate to a cell that is next to the break you want to remove.
- 2) Select **Edit > Delete Manual Break**.
- 3) Select **Row Break** or **Column Break** depending on your need.

The break is now removed.

Note

Multiple manual row and column breaks can exist on the same page. When you want to remove them, you have to remove each one individually. This may be confusing at times, because although there may be a column break set on the page, when you go to **Edit > Manual Break**, the *Column break* choice may not be available (grayed out).

In order to remove the break, you have to be in the cell next to the break. For example, if you set the column break while you are in H15, you can not remove it if you are in cell D15. However, you can remove it from any cell in column H.

Headers and footers

Headers and footers are predefined pieces of text that are printed at the top or bottom of a sheet outside of the sheet area. Headers are set the same way as footers.

Headers and footers are assigned to a page style. You can define more than one page style for a spreadsheet and assign different page styles to different sheets. For more about page styles, see Chapter 4.

Setting a header or a footer

To set a header or footer:

- 1) Navigate to the sheet that you want to set the header or footer for. Select **Format > Page**.
- 2) Select the Header (or Footer) tab. See Figure 8.
- 3) Select the **Header on** option.

From here you can also set the margins, the spacing, and height for the header or footer. You can check the **AutoFit height** box to have the height of the header or footer automatically adjust.

Margin

Changing the size of the left or right margin adjusts how far the header or footer is from the side of the page.

Spacing

Spacing affects how far above or below the sheet the header or footer will print. So, if spacing is set to 1.00", then there will be 1 inch between the header or footer and the sheet.

Height

Height affects how big the header or footer will be.

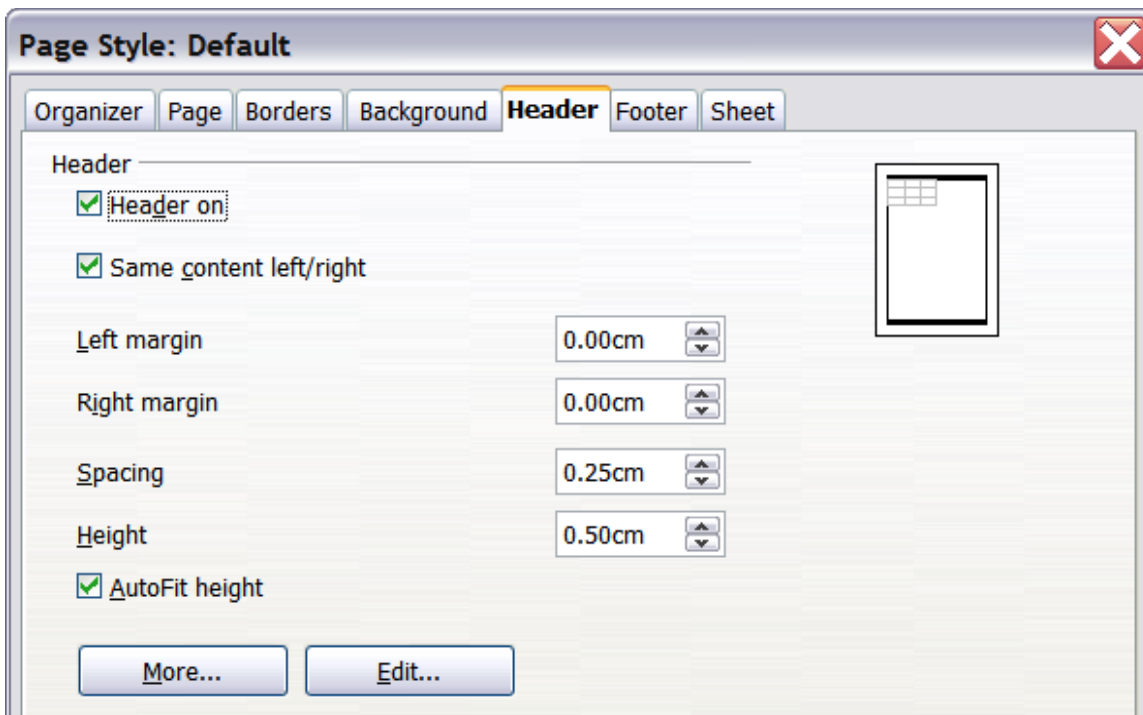


Figure 8: Header dialog

Header or footer appearance

To change the appearance of the header or footer, click the **More** button in the dialog.

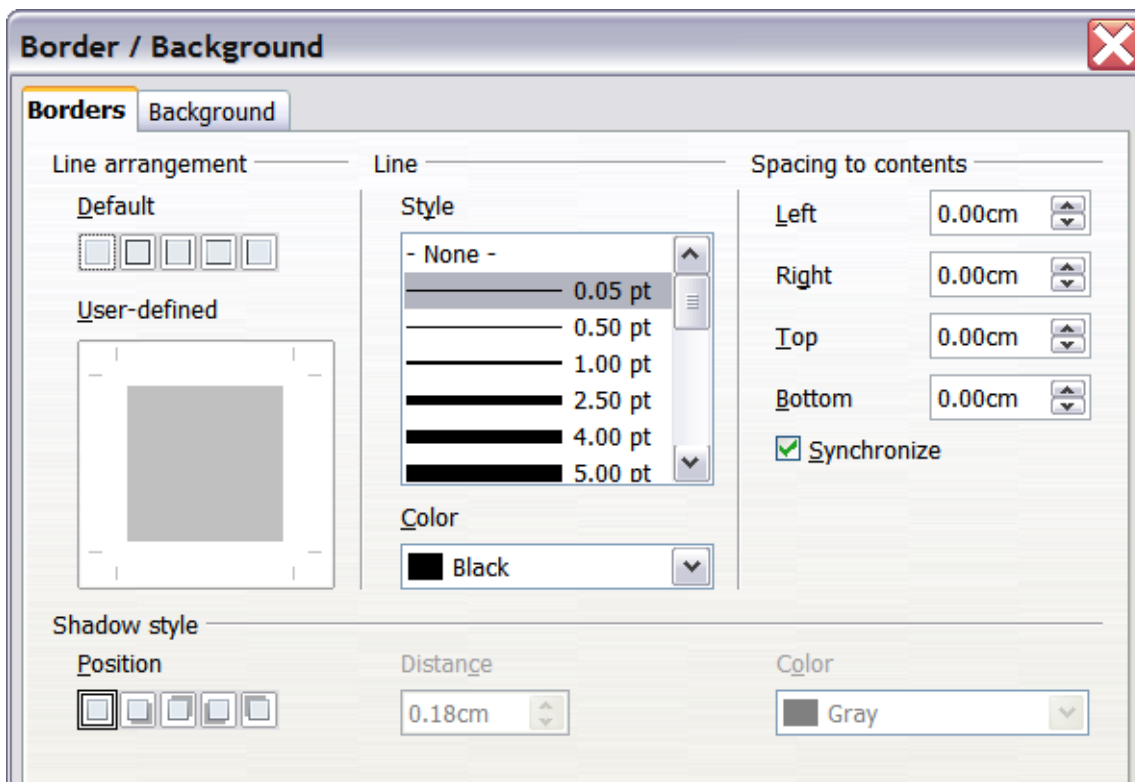


Figure 9: Header/Footer Border/Background

From this dialog you can set the background and border style of the header or footer. See Chapter 4 (Using Styles and Templates) for more information.

Setting the contents of the header or footer

The header or footer of a Calc spreadsheet has three columns for text. Each column can have different contents.

To set the contents of the header or footer, click the **Edit** button in the header or footer dialog shown in Figure 8 to display the dialog shown in Figure 10.

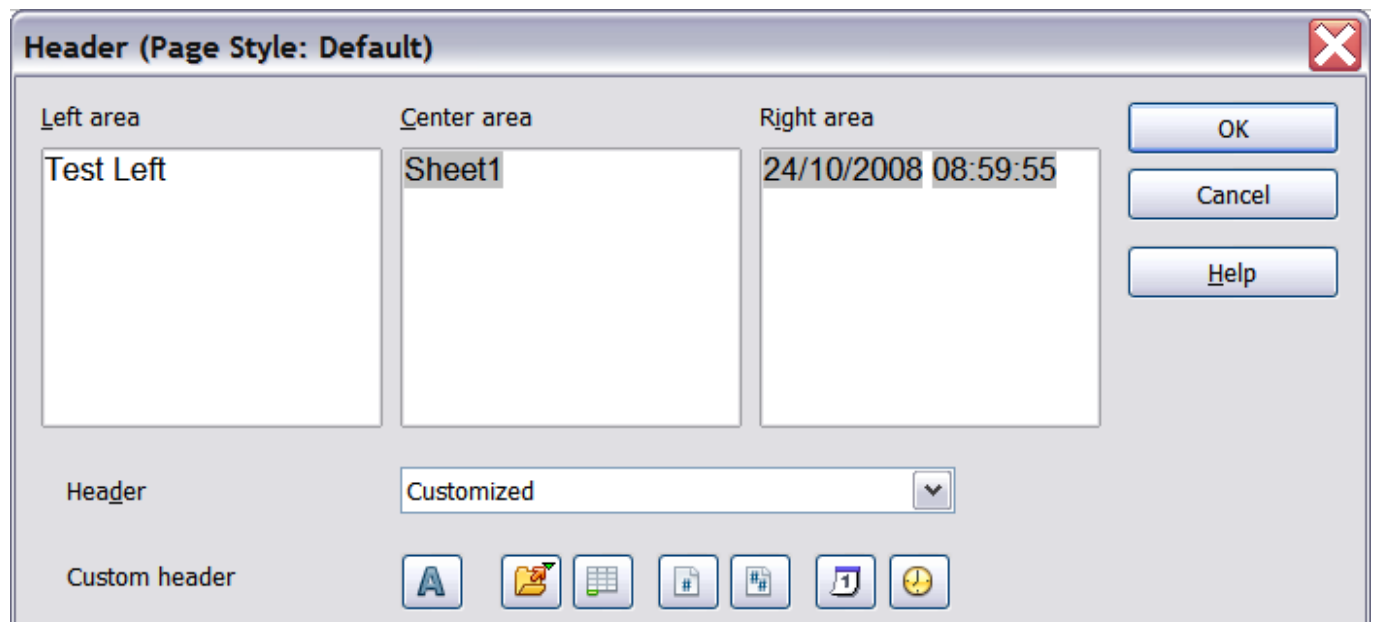


Figure 10: Edit contents of header or footer

Areas



Each area in the header or footer is independent and can have different information in it.






Header

You can select from several preset choices in the Header drop-down list, or specify a custom header using the buttons below the area boxes. (To format a footer, the choices are the same.)

Custom header

Click in the area (Left, Center, Right) that you want to customize, then use the buttons to add elements or change text attributes.


-  Opens the Text Attributes dialog.
-  Inserts the total number of pages.

-  Inserts the File Name field.
-  Inserts the Date field.
-  Inserts the Sheet Name field.
-  Inserts the Time field.
-  Inserts the current page number.

Exporting to PDF

Calc can export documents to PDF (Portable Document Format). This industry-standard file format is ideal for sending the file to someone else to view using Adobe Reader or other PDF viewers.

Quick export to PDF

Click the **Export Directly as PDF** icon  to export the entire document using your default PDF settings. You are asked to enter the file name and location for the PDF file, but you do not get to choose a page range, the image compression, or other options.

Controlling PDF content and quality

For more control over the content and quality of the resulting PDF, use **File > Export as PDF**. The PDF Options dialog opens. This dialog has five pages (General, Initial View, User Interface, Links, and Security). Make your selections, and then click **Export**. Then you are asked to enter the location and file name of the PDF to be created, and click **Save** to export the file.

General page of PDF Options dialog

On the *General* page, you can choose which pages to include in the PDF, the type of compression to use for images (which affects the quality of images in the PDF), and other options.

Range section

- **All:** Exports the entire document.
- **Pages:** To export a range of pages, use the format **3-6** (pages 3 to 6). To export single pages, use the format **7;9;11** (pages 7, 9, and 11). You can also export a combination of page ranges and single pages, by using a format like **3-6;8;10;12**.
- **Selection:** Exports whatever material is selected.

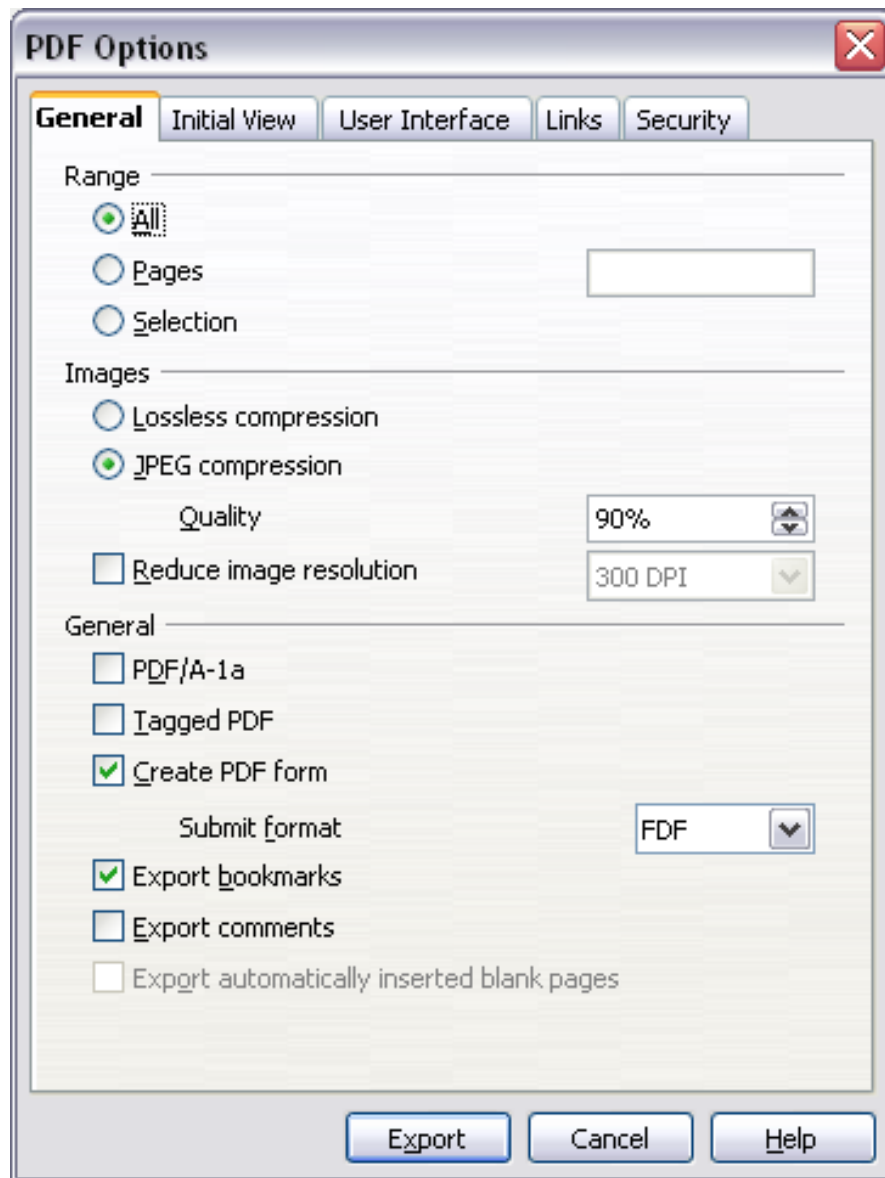


Figure 11: General page of PDF Options dialog

Images section

- **Lossless compression:** Images are stored without any loss of quality. Tends to make large files when used with photographs. Recommended for other kinds of images or graphics.
- **JPEG compression:** Allows for varying degrees of quality. A setting of 90% works well with photographs (small file size, little perceptible loss).
- **Reduce image resolution:** Lower-DPI (dots per inch) images have lower quality. For viewing on a computer screen a resolution of 72dpi (for Windows) or 96dpi (GNU/Linux) is sufficient, while for printing it is generally preferable to use at least 300 or 600 dpi, depending on the capability of the printer. Higher dpi settings greatly increase the size of the exported file.

Note EPS images with embedded previews are exported only as previews. EPS images without embedded previews are exported as empty placeholders.

General section

- **PDF/A-1:** PDF/A is an ISO standard established in 2005 for long-term preservation of documents, by embedding all the pieces necessary for faithful reproduction (such as fonts) while forbidding other elements (including forms, security, encryption, and tagged PDF). If you select PDF/A-1, the forbidden elements are greyed-out (not available).
- **Tagged PDF:** Exports special tags into the corresponding PDF tags. Some tags that are exported are table of contents, hyperlinks, and controls. This option can increase file sizes significantly.
- **Create PDF form - Submit format:** Choose the format for submitting forms from within the PDF file. This setting overrides the control's URL property that you set in the document. There is only one common setting valid for the whole PDF document: PDF (sends the whole document), FDF (sends the control contents), HTML, and XML. Most often you will choose the PDF format.
- **Export bookmarks:** Exports sheet names in Calc documents as "bookmarks" (a table of contents list displayed by some PDF readers, including Adobe Reader).
- **Export comments:** Exports comments in Calc documents as PDF notes. You may not want this!
- **Export automatically inserted blank pages:** Not available in Calc.

Initial View page of PDF Options dialog

On the *Initial View* page (Figure 12), you can choose how the PDF opens by default in a PDF viewer. The selections are self-explanatory.

User Interface page of PDF Options dialog

On the *User Interface* page (Figure 13), you can choose more settings to control how a PDF viewer displays the file. Some of these choices are particularly useful when you are creating a PDF to be used as a presentation or a kiosk-type display.

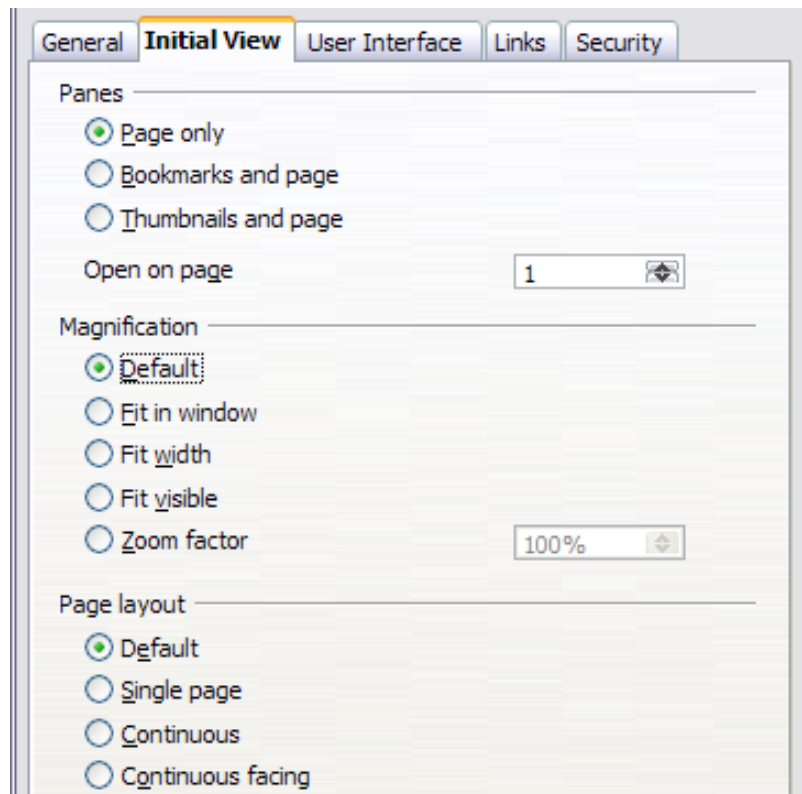


Figure 12: Initial View page of PDF Options dialog

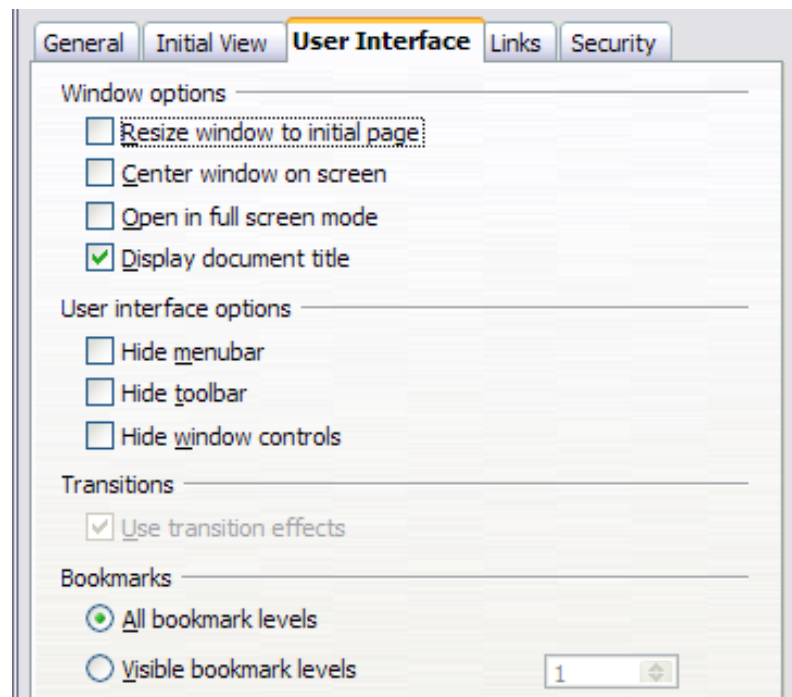


Figure 13: User Interface page of PDF Options dialog

Window options section

- **Resize window to initial page:** Causes the PDF viewer window to resize to fit the first page of the PDF.

- **Center window on screen:** Causes the PDF viewer window to be centered on the computer screen.
- **Open in full screen mode:** Causes the PDF viewer to open full-screen instead of in a smaller window.
- **Display document title:** Causes the PDF viewer to display the document's title in the title bar.

User interface options section

- **Hide menubar:** Causes the PDF viewer to hide the menu bar.
- **Hide toolbar:** Causes the PDF viewer to hide the toolbar.
- **Hide window controls:** Causes the PDF viewer to hide other window controls.

Transitions

Not available in Calc.

Bookmarks

Select how many heading levels are displayed as bookmarks, if *Export bookmarks* is selected on the General page.

Links page of PDF Options dialog

On this page you can choose how links are exported to PDF.

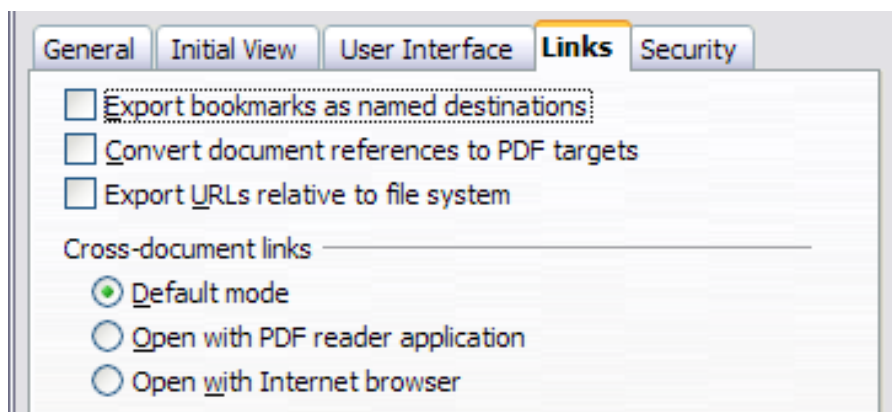


Figure 14: Links page of PDF Options dialog

Export bookmarks as named destinations

If you have defined Writer bookmarks, Impress or Draw slide names, or Calc sheet names, this option exports them as “named destinations” to which Web pages and PDF documents can link.

Convert document references to PDF targets

If you have defined links to other documents with OpenDocument extensions (such as .ODT, .ODS, and .ODP), this option converts the files names to .PDF in the exported PDF document.

Export URLs relative to file system

If you have defined relative links in a document, this option exports those links to the PDF.

Cross-document links

Defines the behavior of links clicked in PDF files.

Security page of PDF Options dialog

PDF export includes options to encrypt the PDF (so it cannot be opened without a password) and apply some digital rights management (DRM) features.

- With an *open password* set, the PDF can only be opened with the password. Once opened, there are no restrictions on what the user can do with the document (for example, print, copy, or change it).
- With a *permissions password* set, the PDF can be opened by anyone, but its permissions can be restricted. See Figure 15.

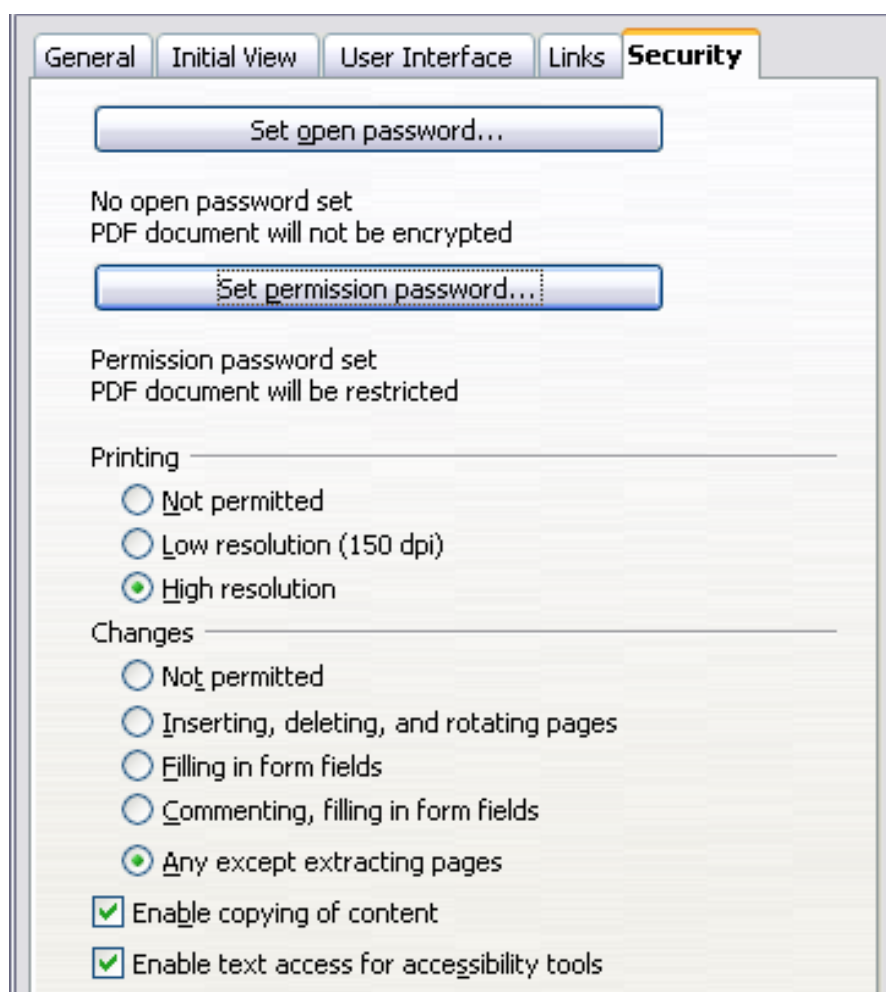


Figure 15: Security page of PDF Options dialog.

- With *both* the *open password* and *permission password* set, the PDF can only be opened with the correct password, and its permissions can be restricted.

Note Permissions settings are effective only if the user's PDF viewer respects the settings.

Figure 16 shows the pop-up dialog displayed when you click the **Set open password** button on the Security page of the PDF Options dialog.

After you set a password for permissions, the other choices on the Security page (shown in Figure 15) become available. These selections are self-explanatory.



Figure 16: Setting a password to encrypt a PDF

Exporting to XHTML

Calc can export spreadsheets to XHTML. Choose **File > Export**. On the Export dialog, specify a file name for the exported document, then select the XHTML in the *File format* list and click the **Export** button.

Saving as Web pages (HTML)

Calc can save files as HTML documents. Use **File > Save As** and select **HTML Document**, or **File > Wizards > Web Page**.

If the file contains more than one sheet, the additional sheets will follow one another in the HTML file. Links to each sheet will be placed at the top of the document. Calc also allows the insertion of links directly into the spreadsheet using the Hyperlink dialog.

E-mailing spreadsheets

OOo provides several quick and easy ways to send spreadsheets as an e-mail attachment in one of three formats: OpenDocument Spreadsheet (OOo's default format), Microsoft Excel, or PDF.

To send the current document in OpenDocument format:

- 1) Choose **File > Send > Document as E-mail**. OpenOffice.org opens your default e-mail program with the spreadsheet (*.ODS) document attached.
- 2) In your e-mail program, enter the recipient, subject, and any text you want to add, then send the e-mail.

File > Send > E-mail as OpenDocument Spreadsheet has the same effect.

If you choose **E-mail as Microsoft Excel**, OOo first creates a file in Excel format and then opens your e-mail program with the *.XLS file attached.

Similarly, if you choose **E-mail as PDF**, OOo first creates a PDF using your default PDF settings (as when using the **Export Directly as PDF** toolbar button) and then opens your email program with the *.PDF file attached.

E-mailing a spreadsheet to several recipients

To e-mail a document to several recipients, you can use the features in your e-mail program or you can use OOo Writer's mail merge facilities to extract email addresses from an address book.

For details, see Chapter 10 (Printing, Exporting, and E-mailing) in the *Getting Started* guide.

Digital signing of documents

To sign a document digitally, you need a personal key, the certificate. A personal key is stored on your computer as a combination of a private key, which must be kept secret, and a public key, which you add to your documents when you sign them. You can get a certificate from a certification authority, which may be a private company or a governmental institution.

When you apply a digital signature to a document, a kind of checksum is computed from the document's content plus your personal key. The checksum and your public key are stored together with the document.


When someone later opens the document on any computer with a recent version of OpenOffice.org, the program will compute the checksum again and compare it with the stored checksum. If both are the same, the program will signal that you see the original, unchanged document. In addition, the program can show you the public key information from the certificate. You can compare the public key with the public key that is published on the web site of the certificate authority.

Whenever someone changes something in the document, this change breaks the digital signature.

On Windows operating systems, the Windows features of validating a signature are used. On Solaris and Linux systems, files that are supplied by Thunderbird, Mozilla or Firefox are used. For a more detailed description of how to get and manage a certificate, and signature validation, see "Using Digital Signatures" in the OOo Help.

To sign a document:

- 1) Choose **File > Digital Signatures**.
- 2) If you have not saved the document since the last change, a message box appears. Click **Yes** to save the file.
- 3) After saving, you see the Digital Signatures dialog. Click **Add** to add a public key to the document.
- 4) In the Select Certificate dialog, select your certificate and click **OK**.
- 5) You see again the Digital Signatures dialog, where you can add more certificates if you want. Click **OK** to add the public key to the saved file.

A signed document shows an icon  in the status bar. You can double-click the icon to view the certificate.

Removing personal data

You may wish to ensure that personal data, versions, notes, hidden information, or recorded changes are removed from files before you send them to other people or create PDFs from them.

In **Tools > Options > OpenOffice.org > Security > Options**, you can set Calc to remind (warn) you when files contain certain information and remove personal information automatically on saving.

To remove personal and some other data from a file, go to **File > Properties**. On the *General* tab, uncheck **Apply user data** and then click the **Reset** button. This removes any names in the created and modified fields, deletes the modification and printing dates, and resets the editing time to zero, the creation date to the current date and time, and the version number to 1.

To remove version information, either go to **File > Versions**, select the versions from the list and click **Delete**, or use **Save As** and save the file with a different name.